

Courtesy Of Ashish Sarpal Of MaxWell Polaris

\$389,000 - 8511 33 Avenue Nw Nw, Edmonton

MLS® #E4256256

\$389,000

4 Bedroom, 3.00 Bathroom, 1,209 sqft
Single Family on 0 Acres

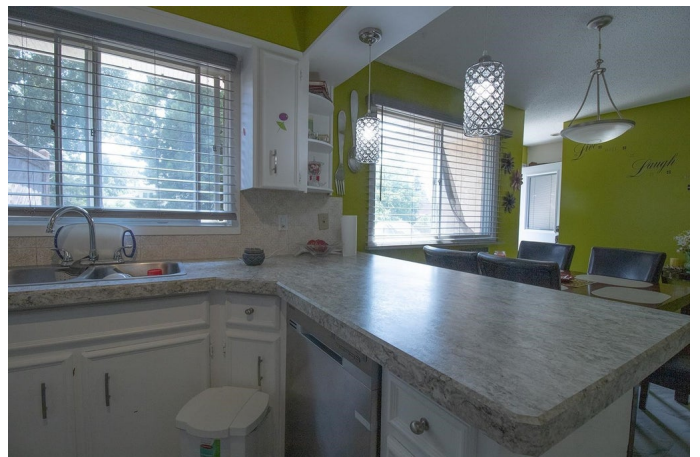
Tipaskan, Edmonton, AB

Wonderful Property for first time home buyers & investors. This bi-level house in Tipaskan is perfect for the growing family! A total of 2291 Sq Ft(1209 Sq Ft+1082 Sq Ft), 3+1 big sized bedrooms and 3 Bathrooms. Main level has generous size family room and full bathroom. Kitchen holds ample cabinetry, counter space and appliances. The fully finished legal basement suite has one bedroom and full bathroom which is already rented and is great contributor towards mortgage. There is a great size family room and a 3 pc bathroom in the basement in addition to the suite for the use of upstairs family or can be used as bachelors suite. Huge backyard for the kids & pets to play and large deck is perfect for summer BBQs. Front access driveway has ample space to park RV, Boat and Cars. Location is excellent, situated close to schools, Millwoods Recreation Centre and at 5 min drive to south common with a great connectivity to public transport.

Built in 1977

Essential Information

MLS® #	E4256256
Price	\$389,000
Bedrooms	4
Bathrooms	3.00



Full Baths	3
Square Footage	1,209
Acres	0.16
Year Built	1977
Type	Single Family
Sub-Type	Residential Detached Single Family
Style	Bi-Level
Status	ACTIVE

Community Information

Address	8511 33 Avenue Nw Nw
Area	Edmonton
Subdivision	Tipaskan
City	Edmonton
County	ALBERTA
Province	AB
Postal Code	T6K 2X9

Amenities

Features	Deck, No Animal Home, R.V. Storage
Parking	Front Drive Access, No Garage

Interior

Interior	Carpet, Laminate Flooring, Linoleum
Interior Features	Oven-Microwave, Stove-Electric, Washer, Refrigerators-Two, Curtains and Blinds, Dishwasher-Built-In, Dryer
Heating	Forced Air-1
Bedrooms on Main Level	Y
Has Basement	Yes
Basement	Fully Finished, Full
# of Stories	2

Exterior

Exterior	Brick, Stucco, Vinyl
Exterior Features	Fenced, Flat Site, Golf Nearby, Landscaped, No Back Lane, Schools, Shopping Nearby, Treed Lot
Roof	Asphalt Shingles
Construction	Wood Frame
Foundation	Concrete

School Information

Elementary Tipaskan School

Middle Edith Rogers School

High J Percy Page High School

Listing information last updated on October 16th, 2021 at 12:46am MDT