

\$1,480,000 - 26501 50 Av, Calmar

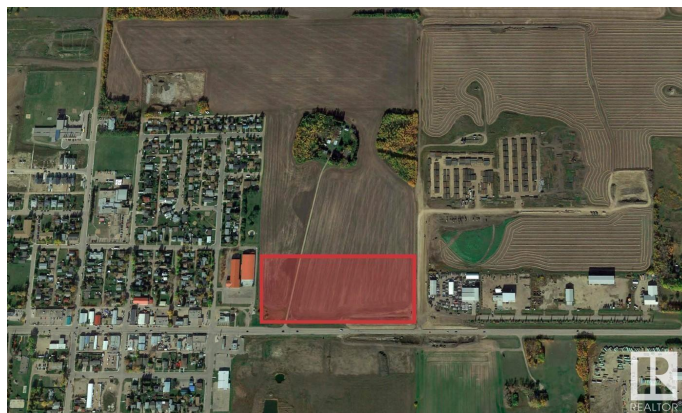
MLS® #E4268737

\$1,480,000

Bedroom, Bathroom,
Land Commercial on 11.64 Acres

Calmar, Calmar, AB

Spectacular OPPORTUNITY to own 11.64 Acres of prime development land with frontage onto Highway 39 with exposure to 9,000 vehicles per day and considerable potential to service the town of Calmar (population 2200+) with an exciting new commercial development strategically located at the town's primary entrance. Developers and investors look no further!



Essential Information

MLS® #	E4268737
Price	\$1,480,000
Acres	11.64
Type	Land Commercial

Community Information

Address	26501 50 Av
Area	Leduc County
Subdivision	Calmar
City	Calmar
Province	AB
Postal Code	T0C 0V0

Additional Information

Date Listed	November 4th, 2021
Zoning	Highway Commercial

DATA IS DEEMED RELIABLE BUT IS NOT GUARANTEED ACCURATE BY THE REALTORS® ASSOCIATION OF

EDMONTON. COPYRIGHT 2024 BY THE REALTORS® ASSOCIATION OF EDMONTON. ALL RIGHTS RESERVED.Trademarks are owned or controlled by the Canadian Real Estate Association (CREA) and identify real estate professionals who are members of CREA (REALTOR®, REALTORS®) and/or the quality of services they provide (MLS®, Multiple Listing Service®)

Listing information last updated on May 9th, 2024 at 3:47pm MDT