

Courtesy Of Noah Issa and Ali Shaben Of Sable Realty

# \$0 - 5013 48 St, Stony Plain

MLS® #E4273696

**\$0**

Bedroom, Bathroom, 8,795 sqft  
Office on 0 Acres

None, Stony Plain, AB

**\*\*SIX MONTHS FREE RENT\*\*** Welcome to Park House Plaza in Stony Plain, Alberta! Over 8,500 SF of fully developed second floor space. Ideal for Daycare, Fitness/Yoga, Dance and general office use. Development permit already in place for Daycare and Out of School Care. Surrounded by a variety of amenities, Park House is situated in close proximity to Highway 16 and has 18,000 VPD on 48th Street.

Built in 1980

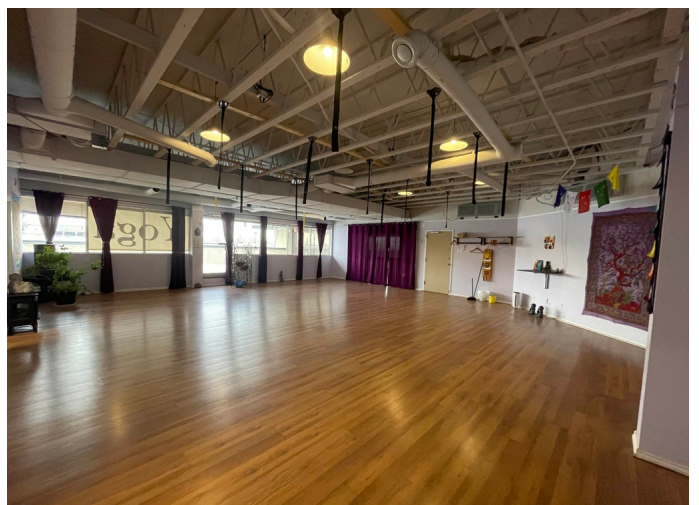
## Essential Information

MLS® #	E4273696
Square Footage	8,795
Acres	0.00
Year Built	1980
Type	Office

## Community Information

Address	5013 48 St
Area	Parkland
Subdivision	None
City	Stony Plain
Province	AB
Postal Code	T7Z 1L8

## Exterior



Construction      See Remarks

**Additional Information**

Zoning              C2 Commercial General

Listing information last updated on June 24th, 2022 at 8:31pm MDT