

\$755,000 - 53324 55 Range Road, Rural Parkland County

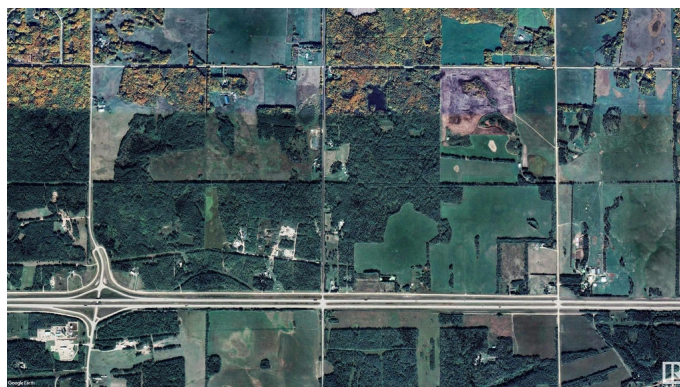
MLS® #E4299585

\$755,000

0 Bedroom, 0.00 Bathroom,
Land Commercial on 0.00 Acres

Seba Beach, Rural Parkland County, AB

Serviced land parcel with partially developed production facility â€¢ Property currently demised as follows: 22,012 sq.ft.Â± steel frame building on 2.73 acresÂ± with services intended for a cannabis cultivation or food production upon completion â€¢ Excess land of 76.27 acresÂ± â€¢ All building plans and transferable permits included as part of the sale â€¢ Located just off HWY 16, North of Wabamun Lake and ~40 minutes from Edmonton city limits â€¢ Water well and an unquantified amount of gravel material to the excess land point

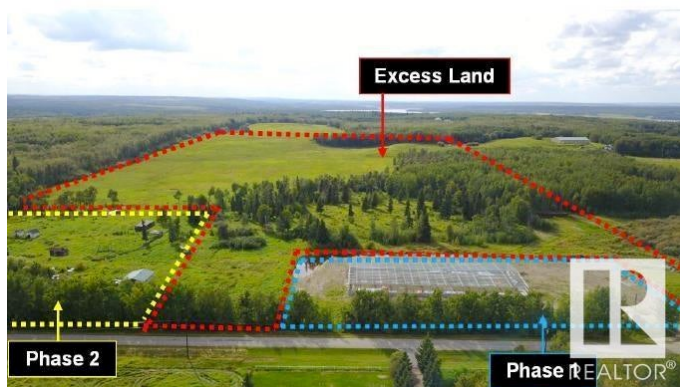


Essential Information

MLS® #	E4299585
Price	\$755,000
Bathrooms	0.00
Acres	0.00
Type	Land Commercial
Status	Active

Community Information

Address	53324 55 Range Road
Area	Rural Parkland County
Subdivision	Seba Beach
City	Rural Parkland County



County	ALBERTA
Province	AB
Postal Code	T0E 2B0

Additional Information

Date Listed	June 14th, 2022
Days on Market	1190
Zoning	Zone 93

DATA IS DEEMED RELIABLE BUT IS NOT GUARANTEED ACCURATE BY THE REALTORS® ASSOCIATION OF EDMONTON. COPYRIGHT 2025 BY THE REALTORS® ASSOCIATION OF EDMONTON. ALL RIGHTS RESERVED. Trademarks are owned or controlled by the Canadian Real Estate Association (CREA) and identify real estate professionals who are members of CREA (REALTOR®, REALTORS®) and/or the quality of services they provide (MLS®, Multiple Listing Service®)

Listing information last updated on September 16th, 2025 at 6:17pm MDT