

## \$0 - # #112 111 Broadway Bv, Sherwood Park

MLS® #E4314318

**\$0**

Bedroom, Bathroom, 2,400 sqft

Retail on 0.00 Acres

Broadview Park, Sherwood Park, AB

2,400-2,850 sq.ft retail/office space located on Broadway Boulevard in Sherwood Park. Other professional tenants include: Core Wellness and Chiropractic, Drift Float Studio & Massage, Celtic Management, Park Veterinary, and Investors Group. Located near Windsor Plywood, Align Orthodontics, and the Bethel Transit Terminal

Built in 2003

### Essential Information

MLS® # E4314318

Square Footage 2,400

Acres 0.00

Year Built 2003

Type Retail

### Community Information

Address # #112 111 Broadway Bv

Area Strathcona

Subdivision Broadview Park

City Sherwood Park

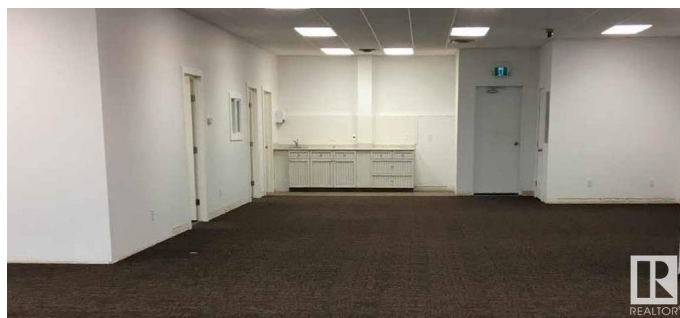
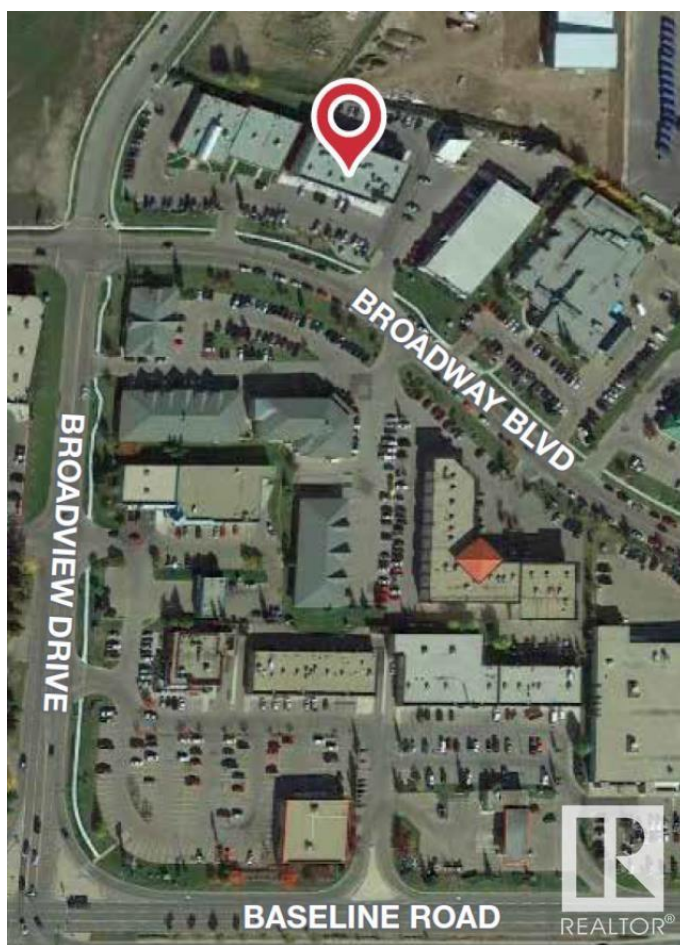
Province AB

Postal Code T8H 1T1

### Exterior

Construction Concrete, Wood Frame

### Additional Information



Date Listed September 21st, 2022

Zoning C5

DATA IS DEEMED RELIABLE BUT IS NOT GUARANTEED ACCURATE BY THE REALTORS® ASSOCIATION OF EDMONTON. COPYRIGHT 2024 BY THE REALTORS® ASSOCIATION OF EDMONTON. ALL RIGHTS RESERVED. Trademarks are owned or controlled by the Canadian Real Estate Association (CREA) and identify real estate professionals who are members of CREA (REALTOR®, REALTORS®) and/or the quality of services they provide (MLS®, Multiple Listing Service®)

Listing information last updated on May 7th, 2024 at 12:31am MDT