

\$399,900 - 10314 Hwy 29, Rural St. Paul County

MLS® #E4331466

\$399,900

Bedroom, Bathroom,
Land Commercial on 11.73 Acres

None, Rural St. Paul County, AB

Improved commercial land just 4 1/2 miles West of St. Paul- This property is presently zoned Agricultural and offers an abundance of possibilities with it's great highway exposure and room to develop for whatever your needs might be. The property has older structures, a drilled well, septic system, power and gas. What could you do with 11.73 acres? The options are many!

Built in 1968

Essential Information

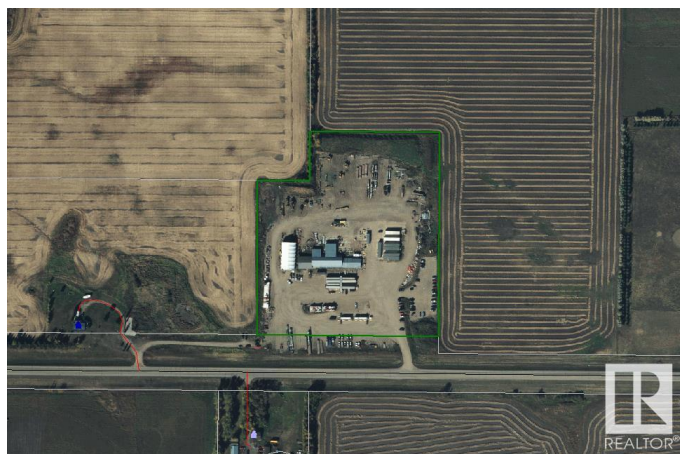
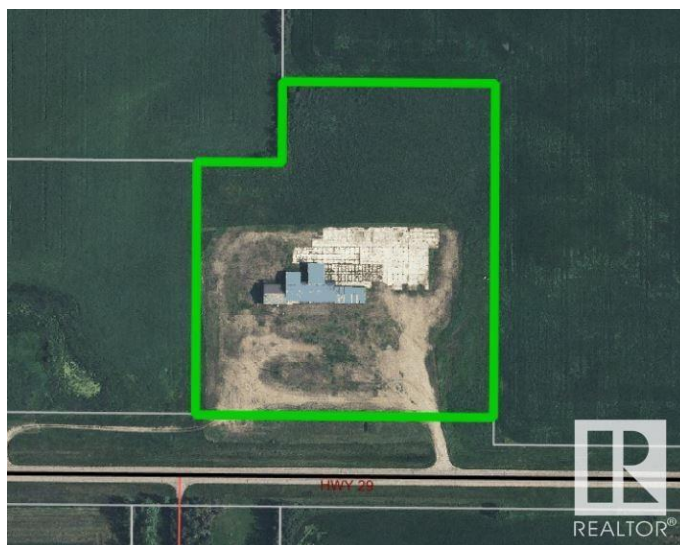
MLS® #	E4331466
Price	\$399,900
Acres	11.73
Year Built	1968
Type	Land Commercial

Community Information

Address	10314 Hwy 29
Area	St. Paul
Subdivision	None
City	Rural St. Paul County
Province	AB
Postal Code	T0A 3A0

Amenities

Features	Cleared, Flat Site, Highway Frontage, High Traffic Area, Visual
----------	---



Exposure, Highway Access

Exterior

Construction Mixed

Additional Information

Date Listed March 16th, 2023

DATA IS DEEMED RELIABLE BUT IS NOT GUARANTEED ACCURATE BY THE REALTORS® ASSOCIATION OF EDMONTON. COPYRIGHT 2024 BY THE REALTORS® ASSOCIATION OF EDMONTON. ALL RIGHTS RESERVED.Trademarks are owned or controlled by the Canadian Real Estate Association (CREA) and identify real estate professionals who are members of CREA (REALTOR®, REALTORS®) and/or the quality of services they provide (MLS®, Multiple Listing Service®)

Listing information last updated on April 24th, 2024 at 6:46pm MDT