

# \$6,023,000 - 26222 Hwy 16, Rural Parkland County

MLS® #E4336436

**\$6,023,000**

Bedroom, Bathroom,  
Land Commercial on 60.23 Acres

None, Rural Parkland County, AB

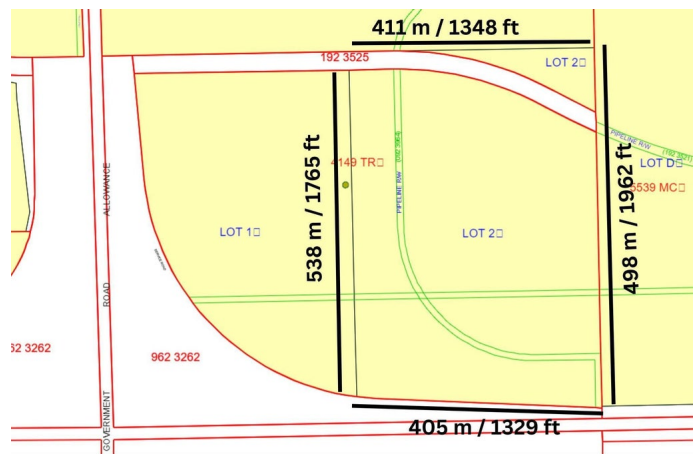
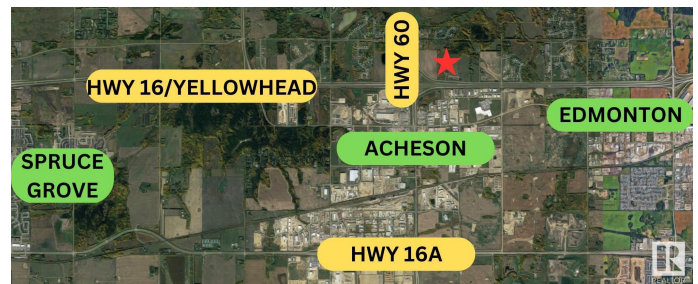
PRIME LOCATION for residential land development!!! Located adjacent to Highways 16 & 60. This 60+/- acre property is ready for residential development. Conveniently located just minutes to Acheson, Edmonton and Spruce Grove, this location would make for a quick commute to work and all amenities. Potential to develop for single family homes with possibility for multi-family homes, providing country living just minutes to all amenities. Property has municipal water and sewer lines. Easy access via Highways 16 and 60, with paved roads to the property. Zoned Country Residential Estate District.

## Essential Information

MLS® #	E4336436
Price	\$6,023,000
Acres	60.23
Type	Land Commercial

## Community Information

Address	26222 Hwy 16
Area	Parkland
Subdivision	None
City	Rural Parkland County
Province	AB
Postal Code	T7Y 1A4



**\*\*Measurements are approximate - Not Guaranteed\*\***

**Additional Information**

Date Listed                April 17th, 2023  
Zoning                      Country Residential Estat

DATA IS DEEMED RELIABLE BUT IS NOT GUARANTEED ACCURATE BY THE REALTORS® ASSOCIATION OF EDMONTON. COPYRIGHT 2024 BY THE REALTORS® ASSOCIATION OF EDMONTON. ALL RIGHTS RESERVED.Trademarks are owned or controlled by the Canadian Real Estate Association (CREA) and identify real estate professionals who are members of CREA (REALTOR®, REALTORS®) and/or the quality of services they provide (MLS®, Multiple Listing Service®)  
Listing information last updated on May 20th, 2024 at 2:16pm MDT