

## \$699,000 - 9551 103a Av Nw, Edmonton

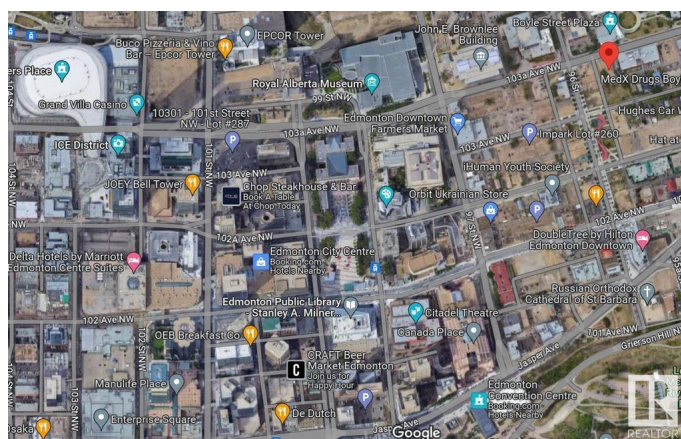
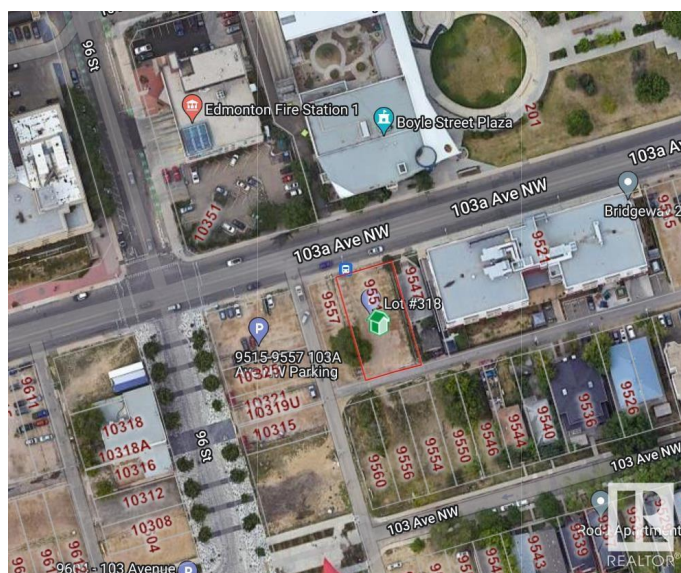
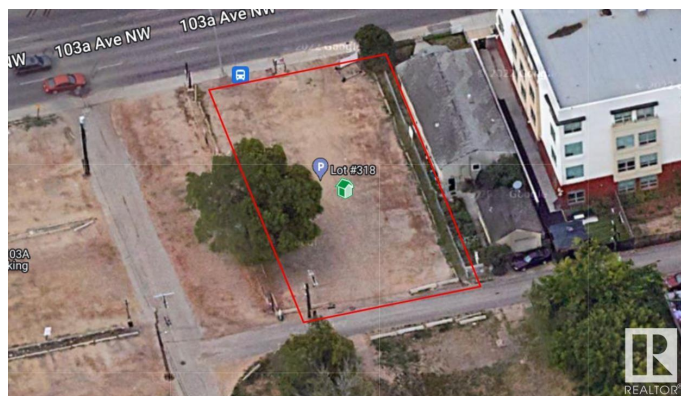
MLS® #E4351222

**\$699,000**

Bedroom, Bathroom,  
Land Commercial on 0.19 Acres

Boyle Street, Edmonton, AB

Excellent re-development site. NOTE!  
NEIGHBORING LOT ALSO FOR SALE! This  
Two side by side lots totaling 748.487 square  
meters. Three lots total 1,123.44 square  
meters. Located 2 blocks to the Alberta  
Museum, Art Gallery, Canada Place, and  
Edmonton Convention center. 3 Blocks to  
Edmonton's city Center, and 5 blocks to the  
newly developed ice district. Prime location for  
holding property or development opportunity.  
Vacant land currently being used as an Impark  
right across from the YMCA and kitty corner to  
the Edmonton Police Service building. Total  
site of three lots is approximately 12,103  
square feet. Don't miss this excellent  
opportunity!



### Essential Information

MLS® #	E4351222
Price	\$699,000
Acres	0.19
Type	Land Commercial

### Community Information

Address	9551 103a Av Nw
Area	Edmonton
Subdivision	Boyle Street
City	Edmonton

Province AB  
Postal Code T5H 2B5

### **Additional Information**

Date Listed July 20th, 2023

DATA IS DEEMED RELIABLE BUT IS NOT GUARANTEED ACCURATE BY THE REALTORS® ASSOCIATION OF EDMONTON. COPYRIGHT 2024 BY THE REALTORS® ASSOCIATION OF EDMONTON. ALL RIGHTS RESERVED. Trademarks are owned or controlled by the Canadian Real Estate Association (CREA) and identify real estate professionals who are members of CREA (REALTOR®, REALTORS®) and/or the quality of services they provide (MLS®, Multiple Listing Service®)

Listing information last updated on May 21st, 2024 at 9:47am MDT