

# \$6,200,000 - 65275 114a Range Road, Rural Lac La Biche County

MLS® #E4390214

**\$6,200,000**

0 Bedroom, 0.00 Bathroom,

Business with Property on 0.00 Acres

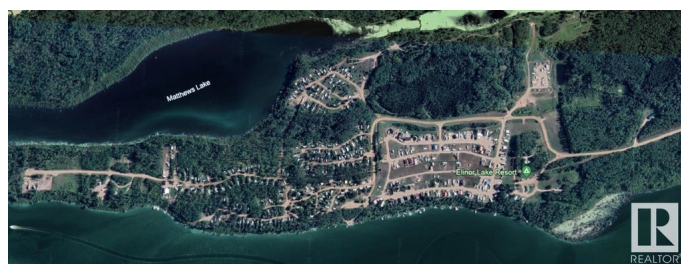
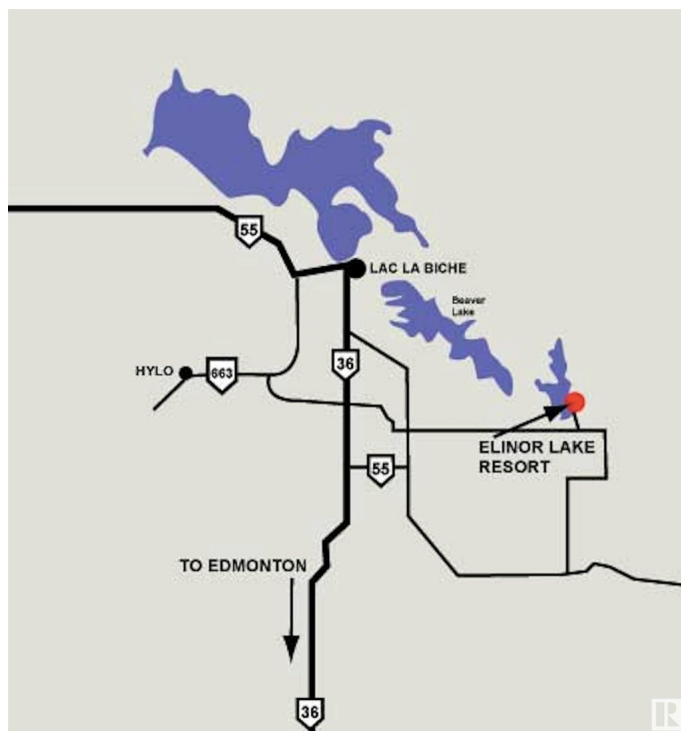
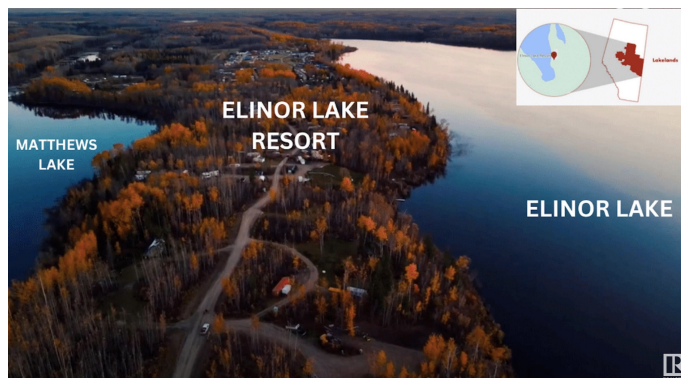
Elinor Lake Resort, Rural Lac La Biche County, AB

Elenor Lake Resort; located 30 minutes from Lac La Biche (one of the oldest, thriving towns in Western Canada) Total Development area including green space: 200 Acres +/- 600 Lots. Land Reserve: 30 Meters from Shoreline. Purchase; Leasing or Rent of Campsite Lots & Cabins. PHASE 1: 168 Lots â€“ 18 Included in the Sale. PHASE 2: 70 Undeveloped Lots. PHASE 3 thru 7: +/-368 Lots of Undeveloped Area. Â½ Mile of Lake Front; Boat launch; Convenience Store; Laundromat and Shower. Quad Wash; Water Station and Sanitation Station. Network of Trails; Ice fishing; Cross-country skiing; Snowmobiling. Easy access from Edmonton & Fort McMurray plus Lakeland Provincial Park.

Built in 2009

## Essential Information

MLS® #	E4390214
Price	\$6,200,000
Bathrooms	0.00
Acres	0.00
Year Built	2009
Type	Business with Property
Status	Active



**Community Information**

Address	65275 114a Range Road
Area	Rural Lac La Biche County
Subdivision	Elinor Lake Resort
City	Rural Lac La Biche County
County	ALBERTA
Province	AB
Postal Code	T0A 2C0

**Exterior**

Exterior	See Remarks
Construction	See Remarks

**Additional Information**

Date Listed	May 30th, 2024
Days on Market	337
Zoning	Zone 60

DATA IS DEEMED RELIABLE BUT IS NOT GUARANTEED ACCURATE BY THE REALTORS® ASSOCIATION OF EDMONTON. COPYRIGHT 2025 BY THE REALTORS® ASSOCIATION OF EDMONTON. ALL RIGHTS RESERVED.Trademarks are owned or controlled by the Canadian Real Estate Association (CREA) and identify real estate professionals who are members of CREA (REALTOR®, REALTORS®) and/or the quality of services they provide (MLS®, Multiple Listing Service®)

Listing information last updated on May 2nd, 2025 at 5:17am MDT