

# **\$987,000 - 44 26106 Twp Road 532 A, Rural Parkland County**

MLS® #E4422386

**\$987,000**

4 Bedroom, 3.00 Bathroom, 1,873 sqft

Rural on 0.55 Acres

Helenslea Heath, Rural Parkland County, AB

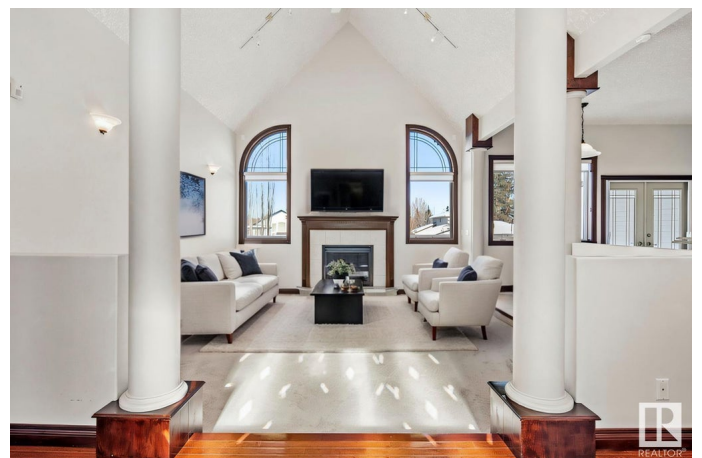
Country Estate Walkout Bungalow with 30-foot cathedral ceilings and numerous windows providing loads of natural light in every room of this elegant 4-bedroom home. Surrounded by gorgeous landscaping and located just steps from Edmonton and Big Lake. A large open kitchen with granite counters overlooks the central great room with gas fireplace. Entertain guests in your formal dining room or outside on a spectacular 650 sq. ft. deck with panoramic views of a park like backyard. The master bedroom offers a fantastic ensuite bathroom with jetted tub, separate shower and large walk-in closet. The fully finished walkout level with tiled in-floor heating boasts a large family room, a 4th bedroom with walk in closet, a separate bathroom with steam shower and ample storage rooms, and a massive, covered patio. This air-conditioned home also offers an oversized heated double attached garage and an oversized heated double detached garage (28x26) with an enormous driveway. A school bus stops in front of home.

Built in 1999

## **Essential Information**

MLS® # E4422386

Price \$987,000



Bedrooms	4
Bathrooms	3.00
Full Baths	3
Square Footage	1,873
Acres	0.55
Year Built	1999
Type	Rural
Sub-Type	Detached Single Family
Style	Bungalow
Status	Active

### Community Information

Address	44 26106 Twp Road 532 A
Area	Rural Parkland County
Subdivision	Helenslea Heath
City	Rural Parkland County
County	ALBERTA
Province	AB
Postal Code	T7Y 1A3

### Amenities

Features	Air Conditioner, Closet Organizers, Deck, No Animal Home, Sauna; Swirlpool; Steam, Sprinkler System-Fire, Vaulted Ceiling, Walkout Basement
----------	---

### Interior

Interior Features	ensuite bathroom
Heating	Forced Air-1, In Floor Heat System, Natural Gas
Stories	2
Has Basement	Yes
Basement	Full, Finished

### Exterior

Exterior	Wood
Exterior Features	Fenced, Flat Site, Fruit Trees/Shrubs, Golf Nearby, Landscaped, Schools, Shopping Nearby
Construction	Wood
Foundation	Concrete Perimeter

### Additional Information

Date Listed February 21st, 2025

Days on Market 70

Zoning Zone 70

DATA IS DEEMED RELIABLE BUT IS NOT GUARANTEED ACCURATE BY THE REALTORS® ASSOCIATION OF EDMONTON. COPYRIGHT 2025 BY THE REALTORS® ASSOCIATION OF EDMONTON. ALL RIGHTS RESERVED. Trademarks are owned or controlled by the Canadian Real Estate Association (CREA) and identify real estate professionals who are members of CREA (REALTOR®, REALTORS®) and/or the quality of services they provide (MLS®, Multiple Listing Service®)

Listing information last updated on May 2nd, 2025 at 7:32pm MDT