

## \$550,000 - 7283 Morgan Road, Edmonton

MLS® #E4424337

**\$550,000**

4 Bedroom, 3.50 Bathroom, 1,553 sqft

Single Family on 0.00 Acres

Griesbach, Edmonton, AB

Welcome to this stunning 2-storey home in the heart of Griesbach! Built in 2017, it offers over 2,000 square feet of stylish, functional living space. The main floor features an open-concept layout with a large island, granite countertops, stainless steel appliances, and 36" upper cabinets—perfect for everyday living and entertaining. The kitchen flows into the bright living and dining areas, giving the space a warm and inviting vibe. Upstairs, you'll find a spacious primary suite with a walk-in closet and ensuite, plus two more bedrooms and a full bathroom. The newly finished basement adds even more flexibility with a large bedroom, rec room, or home office. Stay cool in the summer with central A/C, and enjoy the custom deck, patio, and pet-friendly gravel area out back. The oversized 22'x24' garage easily fits larger vehicles. All of this in one of Edmonton's most sought-after communities—just minutes from parks, trails, and great local amenities!

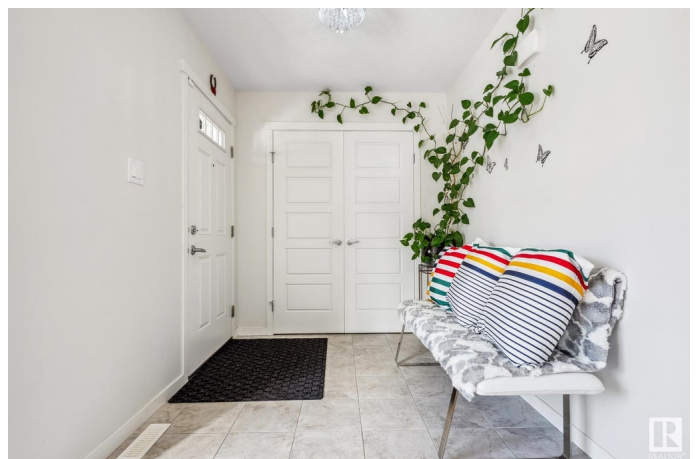
Built in 2017

### Essential Information

MLS® # E4424337

Price \$550,000

Bedrooms 4



Bathrooms	3.50
Full Baths	3
Half Baths	1
Square Footage	1,553
Acres	0.00
Year Built	2017
Type	Single Family
Sub-Type	Detached Single Family
Style	2 Storey
Status	Active

### Community Information

Address	7283 Morgan Road
Area	Edmonton
Subdivision	Griesbach
City	Edmonton
County	ALBERTA
Province	AB
Postal Code	T5E 6V7

### Amenities

Amenities	Air Conditioner, Deck, Patio
Parking	Double Garage Detached, Over Sized

### Interior

Interior Features	ensuite bathroom
Appliances	Air Conditioning-Central, Dishwasher-Built-In, Dryer, Garage Control, Garage Opener, Microwave Hood Fan, Refrigerator, Stove-Electric, See Remarks
Heating	Forced Air-1, Natural Gas
Stories	3
Has Basement	Yes
Basement	Full, Finished

### Exterior

Exterior	Wood, Vinyl
Exterior Features	Back Lane, Landscaped, Low Maintenance Landscape, Paved Lane, Playground Nearby, Public Transportation, Schools, Shopping Nearby
Roof	Asphalt Shingles

Construction	Wood, Vinyl
Foundation	Concrete Perimeter

**Additional Information**

Date Listed	March 6th, 2025
Days on Market	57
Zoning	Zone 27

DATA IS DEEMED RELIABLE BUT IS NOT GUARANTEED ACCURATE BY THE REALTORS® ASSOCIATION OF EDMONTON. COPYRIGHT 2025 BY THE REALTORS® ASSOCIATION OF EDMONTON. ALL RIGHTS RESERVED.Trademarks are owned or controlled by the Canadian Real Estate Association (CREA) and identify real estate professionals who are members of CREA (REALTOR®, REALTORS®) and/or the quality of services they provide (MLS®, Multiple Listing Service®)

Listing information last updated on May 1st, 2025 at 10:47pm MDT