

\$874,000 - 36 54020 Hghway 779, Rural Parkland County

MLS® #E4428194

\$874,000

5 Bedroom, 3.00 Bathroom, 1,998 sqft

Rural on 5.00 Acres

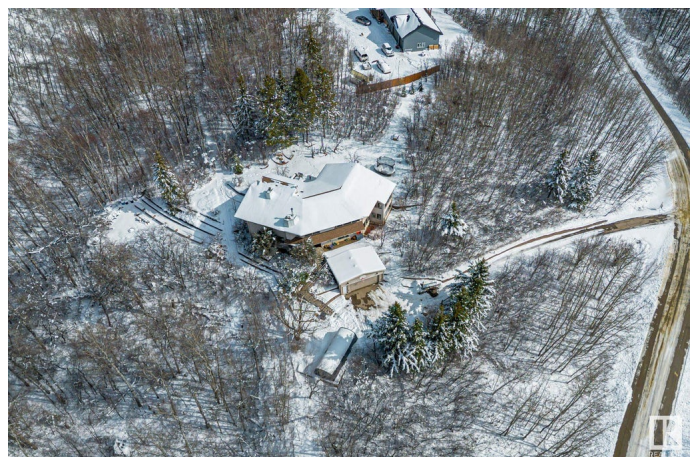
Cameron Lake Estates, Rural Parkland County, AB

This is a hillside home with two levels completed, 2000 sq ft on each. On the upper level there is very modern kitchen and Atrium off that room, and dinette, and a formal dining room. The living room is a monster and what a view of the countryside. It features a huge master bedroom with a steam shower in the 3 pc ensuite, It also features two fireplaces on that level one in the Master bedroom and one in the living room. The main walk-in level has three full sized bedrooms, a four piece bathroom and a super great Great room/games room. All 2000 sq ft on this level is used. Plus we have the lower level which is ground level and has entrance to the oversized double garage. It is all heated with infloor hot water heating.

Built in 1984

Essential Information

| | |
|----------------|-----------|
| MLS® # | E4428194 |
| Price | \$874,000 |
| Bedrooms | 5 |
| Bathrooms | 3.00 |
| Full Baths | 3 |
| Square Footage | 1,998 |
| Acres | 5.00 |
| Year Built | 1984 |



| | |
|----------|------------------------|
| Type | Rural |
| Sub-Type | Detached Single Family |
| Style | Hillside Bungalow |
| Status | Active |

Community Information

| | |
|-------------|-----------------------|
| Address | 36 54020 Highway 779 |
| Area | Rural Parkland County |
| Subdivision | Cameron Lake Estates |
| City | Rural Parkland County |
| County | ALBERTA |
| Province | AB |
| Postal Code | T7Y 0A9 |

Amenities

| | |
|----------|--|
| Features | Ceiling 9 ft., Deck, Exterior Walls- 2"x6", Fire Pit, Sunroom, Vaulted Ceiling, Walkout Basement, Exterior Walls 2"x8" |
|----------|--|

Interior

| | |
|-------------------|-----------------------------------|
| Interior Features | ensuite bathroom |
| Heating | In Floor Heat System, Natural Gas |
| Stories | 2 |
| Has Basement | Yes |
| Basement | Full, Partially Finished |

Exterior

| | |
|-------------------|--|
| Exterior | Wood |
| Exterior Features | Cul-De-Sac, Golf Nearby, Hillside, Low Maintenance Landscape, Private Setting, Rolling Land, Treed Lot |
| Construction | Wood |
| Foundation | Preserved Wood |

Additional Information

| | |
|----------------|------------------|
| Date Listed | March 29th, 2025 |
| Days on Market | 35 |
| Zoning | Zone 70 |

DATA IS DEEMED RELIABLE BUT IS NOT GUARANTEED ACCURATE BY THE REALTORS® ASSOCIATION OF EDMONTON. COPYRIGHT 2025 BY THE REALTORS® ASSOCIATION OF EDMONTON. ALL RIGHTS RESERVED. Trademarks are owned or controlled by the Canadian Real Estate Association (CREA) and identify real estate professionals who are members of CREA (REALTOR®, REALTORS®) and/or the quality of services they

provide (MLS® , Multiple Listing Service®)
Listing information last updated on May 3rd, 2025 at 5:47pm MDT