

\$1,700,000 - 25 52258 Rge Road 231, Rural Strathcona County

MLS® #E4428433

\$1,700,000

4 Bedroom, 4.50 Bathroom, 3,334 sqft

Rural on 2.01 Acres

Windsor Estates, Rural Strathcona County, AB

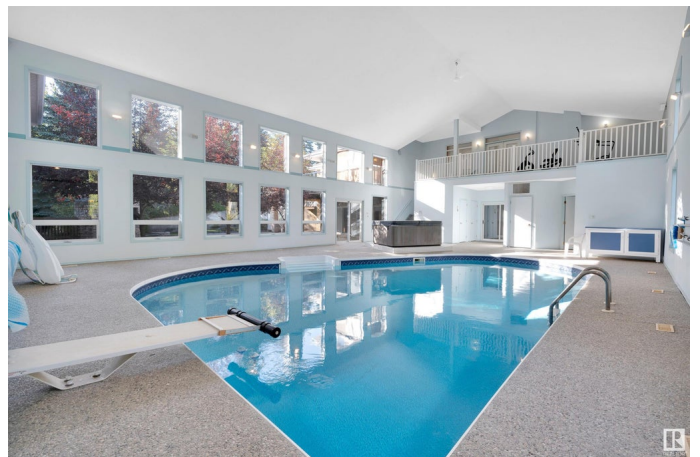
ENTERTAINERS DREAM HOME, with over 6900sqft of SPACE including INDOOR POOL, 4 bedrooms, 6.5 baths, plus 1800sqft with TRIPLE garage & 54x28 SHOP, sitting on a PRIVATE & PICTURESQUE 2.01 acres in the desirable community of Windsor Estates mins to Sherwood Park. A grande entrance invites you into find a family sized kitchen that offers an abundance of cabinets, newer appliances & quartz island that over looks the living rm with fireplace & updated hardwood throughout the dining rm & den (could be main floor bdrm). 3pc bath, 1/2 bath & mud room compliment the layout. Open the patio door & watch the kids in the pool! Moving upstairs you will find a king sized primary suite with balcony, huge WI closet & luxurious ensuite. 2 bdrms, 1 with WI closet, 1 with dual closets, laundry rm & 4pc bath complete the upper level. The WALKOUT basement is sure to IMPRESS, with rec rm complete with bar & fireplace plus access to the gorgeous patio with BI GAS BBQ GRILL & pool. 4th bdrm, den & bath complete this MUST SEE HOME.

Built in 1994

Essential Information

MLS® #

E4428433



Price	\$1,700,000
Bedrooms	4
Bathrooms	4.50
Full Baths	4
Half Baths	1
Square Footage	3,334
Acres	2.01
Year Built	1994
Type	Rural
Sub-Type	Detached Single Family
Style	2 Storey
Status	Active

Community Information

Address	25 52258 Rge Road 231
Area	Rural Strathcona County
Subdivision	Windsor Estates
City	Rural Strathcona County
County	ALBERTA
Province	AB
Postal Code	T8B 1M8

Amenities

Features	Air Conditioner, Barbecue-Built-In, Deck, Hot Tub, Parking-Extra, Patio, Pool-Indoor, R.V. Storage, Sauna; Swirlpool; Steam, Sprinkler Sys-Underground, Vinyl Windows, Walkout Basement, Wet Bar, See Remarks
----------	---

Interior

Interior Features	ensuite bathroom
Heating	Forced Air-1, Natural Gas
Fireplace	Yes
Stories	3
Has Basement	Yes
Basement	Full, Finished

Exterior

Exterior	Wood
Exterior Features	Cul-De-Sac, Landscaped, Private Setting, Schools, Shopping Nearby,

	Treed Lot, See Remarks
Construction	Wood
Foundation	Concrete Perimeter

Additional Information

Date Listed	April 1st, 2025
Days on Market	76
Zoning	Zone 80

DATA IS DEEMED RELIABLE BUT IS NOT GUARANTEED ACCURATE BY THE REALTORS® ASSOCIATION OF EDMONTON. COPYRIGHT 2025 BY THE REALTORS® ASSOCIATION OF EDMONTON. ALL RIGHTS RESERVED. Trademarks are owned or controlled by the Canadian Real Estate Association (CREA) and identify real estate professionals who are members of CREA (REALTOR®, REALTORS®) and/or the quality of services they provide (MLS®, Multiple Listing Service®)

Listing information last updated on June 16th, 2025 at 8:17pm MDT