

\$0 - 8 702 12 Avenue, Nisku

MLS® #E4430753

\$0
0 Bedroom, 0.00 Bathroom,
Industrial on 0.00 Acres

Nisku, Nisku, AB

Units 8
 at 702  Avenue in Nisku offer 5,760 sq.ft.Â± of corner office/warehouse space. The site includes double row parking and 10' ceiling height. The location provides access to Airport Road, Highway 2, and Highway 625.

Built in 1980

Essential Information

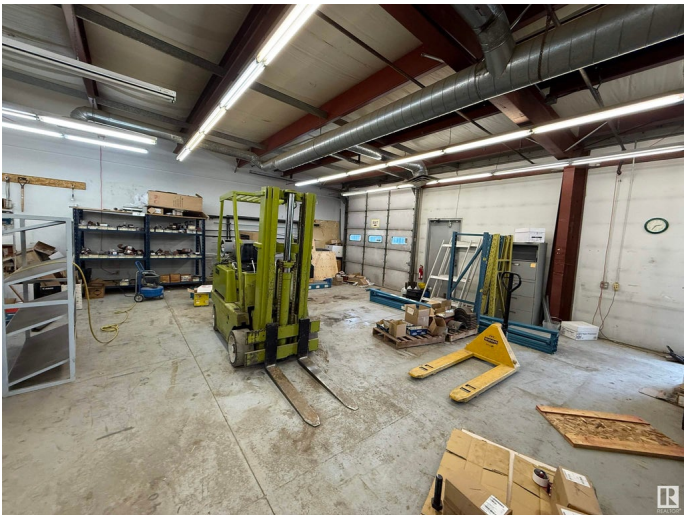
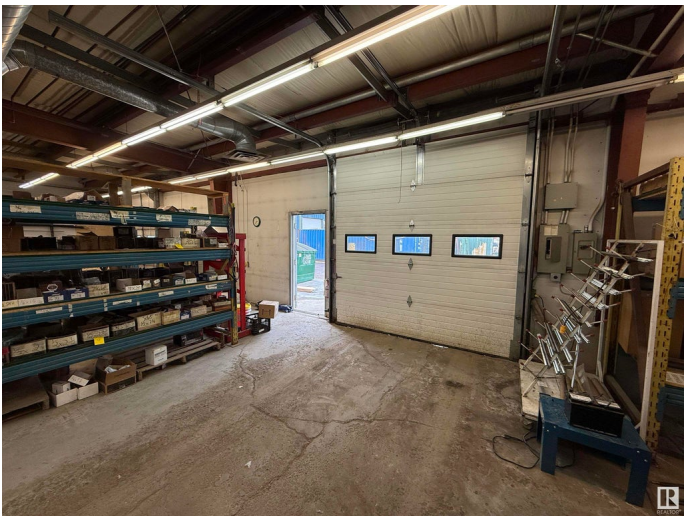
| | |
|------------|------------|
| MLS® # | E4430753 |
| Bathrooms | 0.00 |
| Acres | 0.00 |
| Year Built | 1980 |
| Type | Industrial |
| Status | Active |

Community Information

| | |
|-------------|-----------------|
| Address | 8 702 12 Avenue |
| Area | Nisku |
| Subdivision | Nisku |
| City | Nisku |
| County | ALBERTA |
| Province | AB |
| Postal Code | T9E 7P7 |

Exterior

| | |
|----------|-------|
| Exterior | Mixed |
|----------|-------|



Construction Mixed

Additional Information

Date Listed April 14th, 2025

Days on Market 141

Zoning Zone 81

DATA IS DEEMED RELIABLE BUT IS NOT GUARANTEED ACCURATE BY THE REALTORS® ASSOCIATION OF EDMONTON. COPYRIGHT 2025 BY THE REALTORS® ASSOCIATION OF EDMONTON. ALL RIGHTS RESERVED.Trademarks are owned or controlled by the Canadian Real Estate Association (CREA) and identify real estate professionals who are members of CREA (REALTOR®, REALTORS®) and/or the quality of services they provide (MLS®, Multiple Listing Service®)

Listing information last updated on September 1st, 2025 at 9:31pm MDT