

\$2,340,000 - Twp 511 R Rd 233, Rural Strathcona County

MLS® #E4430815

\$2,340,000

0 Bedroom, 0.00 Bathroom,
Rural on 155.99 Acres

Colchester Lane, Rural Strathcona County, AB

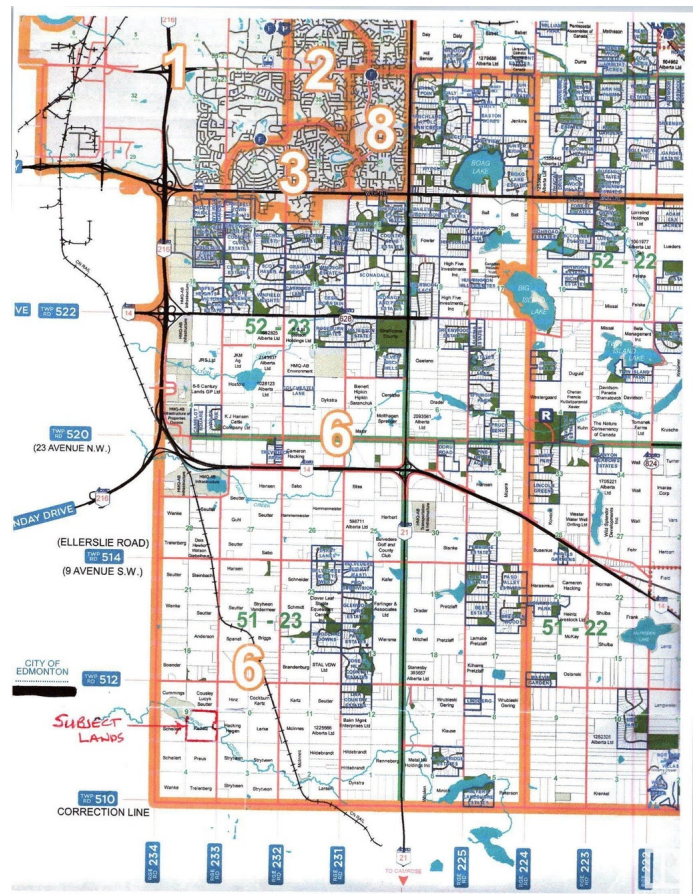
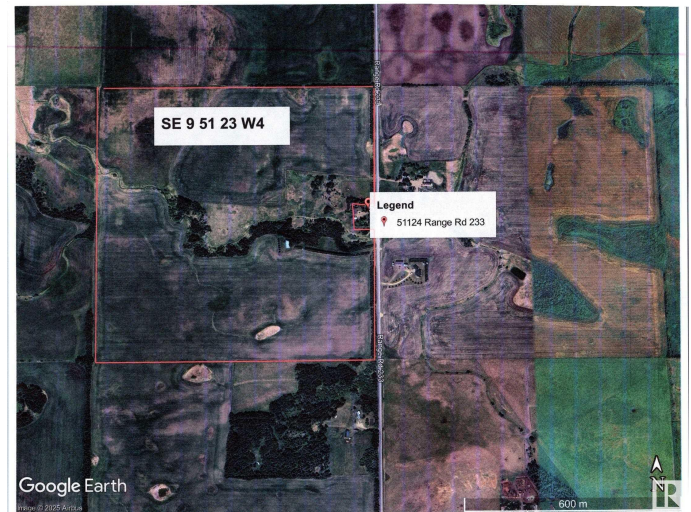
ENJOY rural life. Situated in Strathcona County and located 1 east of the City of Edmonton Limits. Currently being farmed. A 42ft X 72 ft metal building for equipment storage. A natural treed ravine cross the lands providing for a unique settings for future country living. Excellent access via TWP 510, east to HWY 21 and west to QEII. Close to Beaumont, EIA and south east Edmonton.

Essential Information

MLS® #	E4430815
Price	\$2,340,000
Bathrooms	0.00
Acres	155.99
Type	Rural
Sub-Type	Vacant Lot/Land
Status	Active

Community Information

Address	Twp 511 R Rd 233
Area	Rural Strathcona County
Subdivision	Colchester Lane
City	Rural Strathcona County
County	ALBERTA
Province	AB



Postal Code T8B 1K6

Exterior

Exterior Features See Remarks

Additional Information

Date Listed April 14th, 2025

Days on Market 110

Zoning Zone 80

DATA IS DEEMED RELIABLE BUT IS NOT GUARANTEED ACCURATE BY THE REALTORS® ASSOCIATION OF EDMONTON. COPYRIGHT 2025 BY THE REALTORS® ASSOCIATION OF EDMONTON. ALL RIGHTS RESERVED.Trademarks are owned or controlled by the Canadian Real Estate Association (CREA) and identify real estate professionals who are members of CREA (REALTOR®, REALTORS®) and/or the quality of services they provide (MLS®, Multiple Listing Service®)

Listing information last updated on August 2nd, 2025 at 7:17am MDT