

\$670,000 - 14540 115 Avenue, Edmonton

MLS® #E4431253

\$670,000

0 Bedroom, 0.00 Bathroom,
Industrial on 0.00 Acres

Huff Bremner Estate Industrial, Edmonton, AB

2,772 SF industrial condo with rear fenced yard available for owner/user or investment. Front of the bay has reception, one office and a lunchroom. Warehouse is open with sump and 16' tall overhead door. Great location with easy access to 149 Street and Yellowhead Trail.

Built in 1964

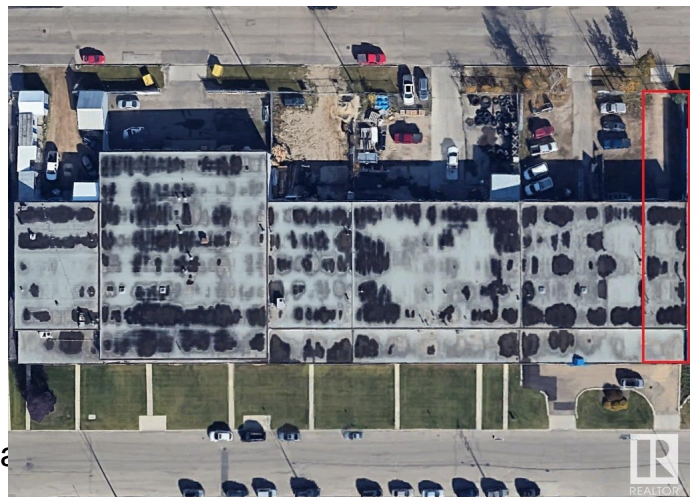
Essential Information

MLS® #	E4431253
Price	\$670,000
Bathrooms	0.00
Acres	0.00
Year Built	1964
Type	Industrial
Status	Active

Community Information

Address	14540 115 Avenue
Area	Edmonton
Subdivision	Huff Bremner Estate Industrial
City	Edmonton
County	ALBERTA
Province	AB
Postal Code	T5M 3B9

Exterior



Exterior	Block
Construction	Block

Additional Information

Date Listed	April 14th, 2025
Days on Market	110
Zoning	Zone 40

DATA IS DEEMED RELIABLE BUT IS NOT GUARANTEED ACCURATE BY THE REALTORS® ASSOCIATION OF EDMONTON. COPYRIGHT 2025 BY THE REALTORS® ASSOCIATION OF EDMONTON. ALL RIGHTS RESERVED.Trademarks are owned or controlled by the Canadian Real Estate Association (CREA) and identify real estate professionals who are members of CREA (REALTOR®, REALTORS®) and/or the quality of services they provide (MLS®, Multiple Listing Service®)

Listing information last updated on August 2nd, 2025 at 5:02pm MDT