

Courtesy Of Jeff D Jackson Of Bode

\$599,000 - 1534 Grant Way, Edmonton

MLS® #E4431973

\$599,000

4 Bedroom, 3.00 Bathroom, 2,008 sqft

Single Family on 0.00 Acres

Glastonbury, Edmonton, AB

Nestled in the heart of Grange Landing within the established Glastonbury community, welcome to this stunning Parkwood Homes property. Featuring a charming Craftsman elevation, this home is thoughtfully designed with a fourth bedroom and full bathroom on the main floor, ideal for guests.. The kitchen boasts a substantial island with a flush eating bar, a cozy dining nook, and a walk-through pantry with access from the mudroom for ultimate functionality. Upstairs, enjoy the convenience of second-floor laundry, a central bonus room, three spacious bedrooms, and a luxurious primary bedroom with an impressive four-piece ensuite and a generous walk-in closet. With a lot that backs onto a tranquil walkway, a separate side entrance, and one of only 24 lots available in this unique subdivision, this home offers the rare opportunity to experience new construction within a well-established neighbourhood. Enjoy the flourishing amenities of Glastonbury. Photos are representative.

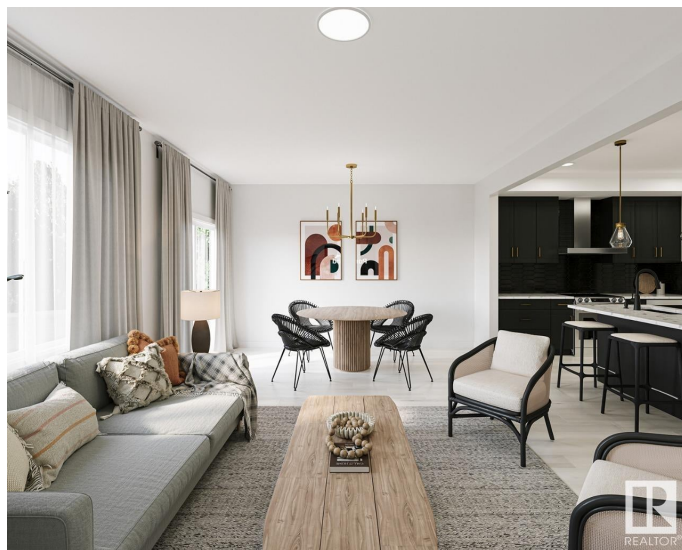
Built in 2025

Essential Information

MLS® # E4431973

Price \$599,000

Bedrooms 4



Bathrooms	3.00
Full Baths	3
Square Footage	2,008
Acres	0.00
Year Built	2025
Type	Single Family
Sub-Type	Detached Single Family
Style	2 Storey
Status	Active

Community Information

Address	1534 Grant Way
Area	Edmonton
Subdivision	Glastonbury
City	Edmonton
County	ALBERTA
Province	AB
Postal Code	T5T 0W2

Amenities

Amenities	No Animal Home, No Smoking Home, See Remarks
Parking Spaces	4
Parking	Double Garage Attached

Interior

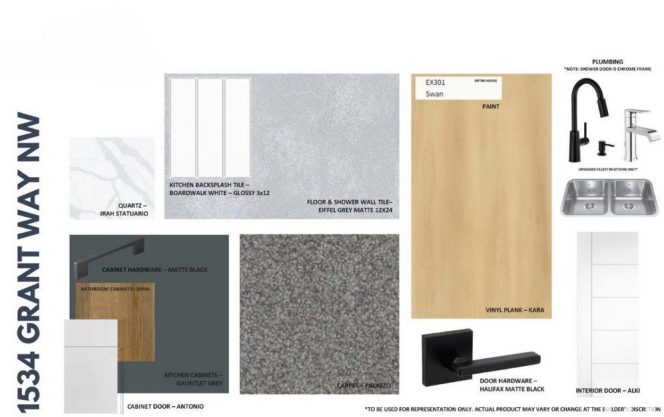
Interior Features	ensuite bathroom
Appliances	Hood Fan, Oven-Microwave
Heating	Forced Air-1, Natural Gas
Stories	2
Has Basement	Yes
Basement	Full, Unfinished

Exterior

Exterior	Wood, Fiber Cement, Vinyl
Exterior Features	Park/Reserve, Playground Nearby, Schools, Shopping Nearby
Roof	Asphalt Shingles
Construction	Wood, Fiber Cement, Vinyl
Foundation	Concrete Perimeter

Additional Information

Date Listed April 21st, 2025
Days on Market 32
Zoning Zone 58



DATA IS DEEMED RELIABLE BUT IS NOT GUARANTEED ACCURATE BY THE REALTORS® ASSOCIATION OF EDMONTON. COPYRIGHT 2025 BY THE REALTORS® ASSOCIATION OF EDMONTON. ALL RIGHTS RESERVED. Trademarks are owned or controlled by the Canadian Real Estate Association (CREA) and identify real estate professionals who are members of CREA (REALTOR®, REALTORS®) and/or the quality of services they provide (MLS®, Multiple Listing Service®)
Listing information last updated on May 23rd, 2025 at 2:02am MDT