

\$467,900 - 26 Hope Common, Spruce Grove

MLS® #E4432698

\$467,900

3 Bedroom, 2.50 Bathroom, 1,561 sqft
Single Family on 0.00 Acres

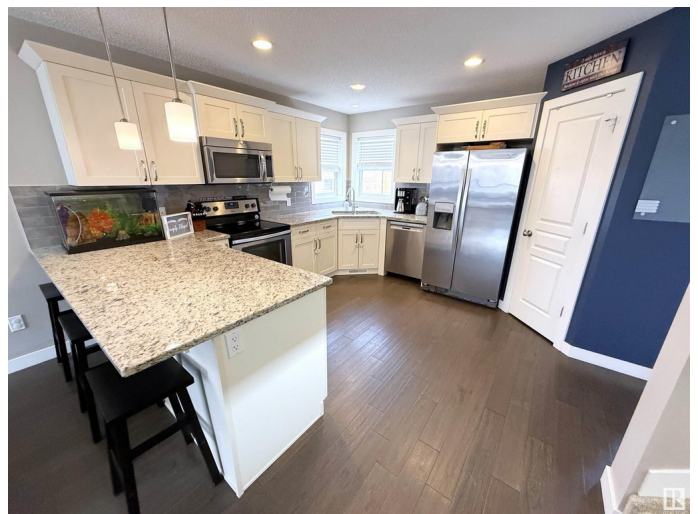
Harvest Ridge, Spruce Grove, AB

Beautiful 2017-built 2-storey with heated detached garage (21Wx21L, 220V & 40 amp welding plug) in Harvest Ridge. This 1,560 sq ft (plus full basement) home features an open concept layout with engineered hardwood floors, 9â€™™ ceilings and central air conditioning. On the main floor: 2-pc powder room, bright living room with large south-west facing windows, centrally located dining area and a gourmet kitchen with eat-up peninsula, granite counters and walk-in corner pantry. Upstairs: a cozy bonus room, 2 full bathrooms and 3 bedrooms including the ownerâ€™™s suite with 3-piece ensuite & walk-in closet. The partially finished basement features roughed-in plumbing with all of the equipment needed to complete the job! Outside: covered front porch and fenced back yard, deck with privacy wall and paved back alley access to the garage. Located within walking distance to schools & nature trails, with all the amenities of Spruce Grove. Fantastic opportunity to live in this sought-after neighbourhood!

Built in 2016

Essential Information

| | |
|----------|-----------|
| MLS® # | E4432698 |
| Price | \$467,900 |
| Bedrooms | 3 |



| | |
|----------------|------------------------|
| Bathrooms | 2.50 |
| Full Baths | 2 |
| Half Baths | 1 |
| Square Footage | 1,561 |
| Acres | 0.00 |
| Year Built | 2016 |
| Type | Single Family |
| Sub-Type | Detached Single Family |
| Style | 2 Storey |
| Status | Active |

Community Information

| | |
|-------------|----------------|
| Address | 26 Hope Common |
| Area | Spruce Grove |
| Subdivision | Harvest Ridge |
| City | Spruce Grove |
| County | ALBERTA |
| Province | AB |
| Postal Code | T7X 0X3 |

Amenities

| | |
|-----------|--|
| Amenities | Air Conditioner, Ceiling 9 ft., Deck, Dog Run-Fenced In, Front Porch, No Smoking Home, Vinyl Windows, Vacuum System-Roughed-In |
| Parking | 220 Volt Wiring, Double Garage Detached, Heated, Insulated, Parking Pad Cement/Paved, Rear Drive Access |

Interior

| | |
|-------------------|---|
| Interior Features | ensuite bathroom |
| Appliances | Air Conditioning-Central, Dishwasher-Built-In, Dryer, Garage Opener, Microwave Hood Fan, Refrigerator, Stove-Electric, Washer, Window Coverings |
| Heating | Forced Air-1, Natural Gas |
| Stories | 2 |
| Has Basement | Yes |
| Basement | Full, Finished |

Exterior

| | |
|-------------------|--|
| Exterior | Wood, Vinyl |
| Exterior Features | Back Lane, Fenced, Golf Nearby, Park/Reserve, Picnic Area, Playground Nearby, Public Swimming Pool, Schools, Shopping Nearby |

| | |
|--------------|--------------------|
| Roof | Asphalt Shingles |
| Construction | Wood, Vinyl |
| Foundation | Concrete Perimeter |

Additional Information

| | |
|----------------|------------------|
| Date Listed | April 25th, 2025 |
| Days on Market | 7 |
| Zoning | Zone 91 |

DATA IS DEEMED RELIABLE BUT IS NOT GUARANTEED ACCURATE BY THE REALTORS® ASSOCIATION OF EDMONTON. COPYRIGHT 2025 BY THE REALTORS® ASSOCIATION OF EDMONTON. ALL RIGHTS RESERVED.Trademarks are owned or controlled by the Canadian Real Estate Association (CREA) and identify real estate professionals who are members of CREA (REALTOR®, REALTORS®) and/or the quality of services they provide (MLS®, Multiple Listing Service®)

Listing information last updated on May 2nd, 2025 at 8:02am MDT