

\$849,900 - 278 52152 Rge Road 225, Rural Strathcona County

MLS® #E4432782

\$849,900

3 Bedroom, 3.00 Bathroom, 2,356 sqft

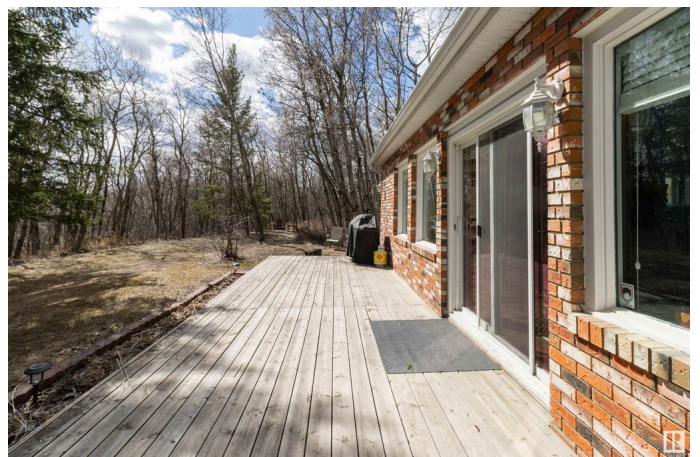
Rural on 5.08 Acres

Greenwood Estates (Strathcona), Rural Strathcona County, AB

Upgraded Chalet-Style Home in Private Treed 5 acre Setting â€” Close to Town This beautifully upgraded chalet-style home offers the perfect blend of tranquility and convenience, set on a private treed lot backing a 20-acre reserve with walking trails. Enjoy outdoor living with decks on both sides, a hot tub, and a firepit area. Inside, vaulted ceilings and large windows fill the great room with light, anchored by a striking feature fireplace. The upgraded kitchen boasts quartz countertops and stainless appliances, complemented by hardwood and laminate flooring throughout. The main floor features a second living/TV room, a third bedroom, an updated full bath, and a laundry room. Upstairs, the spacious master suite includes a 4-piece ensuite, along with a second bedroom and another full bath. A hallway overlooks the spectacular great room below, enhancing the homeâ€™s open feel. Additional perks include a sunroom, an oversized double garage, and city-style water/sewer servicesâ€”all just minutes from town.

Built in 1974

Essential Information



MLS® #	E4432782
Price	\$849,900
Bedrooms	3
Bathrooms	3.00
Full Baths	3
Square Footage	2,356
Acres	5.08
Year Built	1974
Type	Rural
Sub-Type	Detached Single Family
Style	2 Storey
Status	Active

Community Information

Address	278 52152 Rge Road 225
Area	Rural Strathcona County
Subdivision	Greenwood Estates (Strathcona)
City	Rural Strathcona County
County	ALBERTA
Province	AB
Postal Code	T8C 1C6

Amenities

Features	Air Conditioner, Deck, Fire Pit
Parking Spaces	10

Interior

Interior Features	ensuite bathroom
Heating	Forced Air-1, Natural Gas
Stories	2
Has Basement	Yes
Basement	Partial, Unfinished

Exterior

Exterior	Wood
Exterior Features	Landscaped, Park/Reserve, Private Setting, Treed Lot
Construction	Wood
Foundation	Concrete Perimeter

Additional Information

Date Listed April 25th, 2025

Days on Market 8

Zoning Zone 80

DATA IS DEEMED RELIABLE BUT IS NOT GUARANTEED ACCURATE BY THE REALTORS® ASSOCIATION OF EDMONTON. COPYRIGHT 2025 BY THE REALTORS® ASSOCIATION OF EDMONTON. ALL RIGHTS RESERVED. Trademarks are owned or controlled by the Canadian Real Estate Association (CREA) and identify real estate professionals who are members of CREA (REALTOR®, REALTORS®) and/or the quality of services they provide (MLS®, Multiple Listing Service®)

Listing information last updated on May 3rd, 2025 at 9:02am MDT