

\$269,900 - 506 11080 Ellerslie Road, Edmonton

MLS® #E4432922

\$269,900

1 Bedroom, 1.00 Bathroom, 645 sqft

Condo / Townhouse on 0.00 Acres

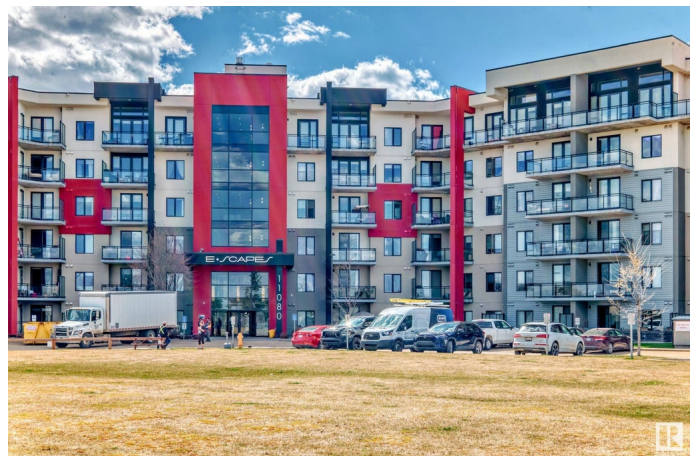
Richford, Edmonton, AB

EXECUTIVE CONDO! CONCRETE BUILDING! FULLY FURNISHED!! Perfect for 1st time home buyer or investor. This 1BDRM, 1BATH Condo W/HEATED UNDERGROUND Parking features engineered hardwood flows throughout. The gourmet kitchen offers french white cabinets, stainless steel appliances, quartz counter tops and a tastefully chosen back splash. The bathroom is a true LUXURY with the modern deep soaker tub. The balcony will offers hours of relaxation with your morning coffee. The location of this complex is VERY convenient with shops, restaurants and more within walking distance. This complex is steel and concrete for security and NO sound transfer between units, the ceilings are 9 ft high and the amenities are second to none with outdoor patios, social rooms, meeting room and fitness room. This unit is a **MUST SEE!!**

Built in 2014

Essential Information

MLS® #	E4432922
Price	\$269,900
Bedrooms	1
Bathrooms	1.00
Full Baths	1
Square Footage	645



Acres	0.00
Year Built	2014
Type	Condo / Townhouse
Sub-Type	Lowrise Apartment
Style	Single Level Apartment
Status	Active

Community Information

Address	506 11080 Ellerslie Road
Area	Edmonton
Subdivision	Richford
City	Edmonton
County	ALBERTA
Province	AB
Postal Code	T6W 2C2

Amenities

Amenities	Air Conditioner, Detectors Smoke, Guest Suite, No Animal Home, No Smoking Home, Party Room, Secured Parking, Social Rooms, Natural Gas BBQ Hookup
Parking	Underground

Interior

Appliances	Dishwasher-Built-In, Microwave Hood Fan, Refrigerator, Stacked Washer/Dryer, Stove-Electric
Heating	Fan Coil, Natural Gas
# of Stories	6
Stories	6
Has Basement	Yes
Basement	None, No Basement

Exterior

Exterior	Concrete, Metal, Stucco
Exterior Features	Backs Onto Park/Trees, Golf Nearby, Schools, Shopping Nearby
Roof	Flat
Construction	Concrete, Metal, Stucco
Foundation	Concrete Perimeter

Additional Information

Date Listed	April 25th, 2025
-------------	------------------

Days on Market	8
Zoning	Zone 55
Condo Fee	\$440

DATA IS DEEMED RELIABLE BUT IS NOT GUARANTEED ACCURATE BY THE REALTORS® ASSOCIATION OF EDMONTON. COPYRIGHT 2025 BY THE REALTORS® ASSOCIATION OF EDMONTON. ALL RIGHTS RESERVED. Trademarks are owned or controlled by the Canadian Real Estate Association (CREA) and identify real estate professionals who are members of CREA (REALTOR®, REALTORS®) and/or the quality of services they provide (MLS®, Multiple Listing Service®)

Listing information last updated on May 3rd, 2025 at 7:32am MDT