

\$174,900 - 303 10003 87 Avenue, Edmonton

MLS® #E4433050

\$174,900

1 Bedroom, 1.00 Bathroom, 680 sqft

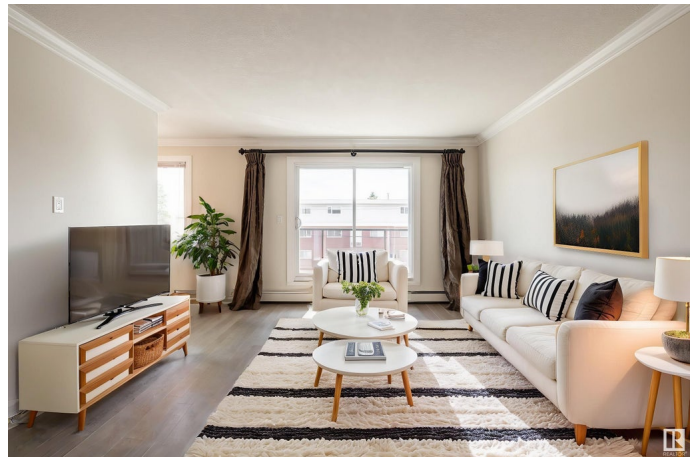
Condo / Townhouse on 0.00 Acres

Strathcona, Edmonton, AB

GREAT INVESTMENT OPPORTUNITY!

PRIME LOCATION! Welcome to

Strathcona—one of Edmonton's most vibrant communities. This beautifully updated 1 Bed, 1 Bath upper-level condo is move-in ready with brand new vinyl plank flooring, fresh paint, granite counters, elegant crown moulding, and a knock-down ceiling with sound-reducing insulation. The bright, open-concept layout features a functional kitchen with stainless steel appliances, in-suite laundry, and a large balcony—perfect for relaxing or entertaining. The spacious primary bedroom and large windows bring in plenty of natural light. Located just a few blocks from Whyte Avenue, you're close to local eateries, trendy shops, nightlife, and theatre. Minutes to downtown, the river valley, Mill Creek Ravine, schools, and public transit. Whether you're a first-time buyer, downsizer, or investor, this is an amazing opportunity in an unbeatable location. SOME PHOTOS ARE VIRTUALLY STAGED.



Built in 1981

Essential Information

MLS® # E4433050

Price \$174,900

Bedrooms 1

Bathrooms	1.00
Full Baths	1
Square Footage	680
Acres	0.00
Year Built	1981
Type	Condo / Townhouse
Sub-Type	Lowrise Apartment
Style	Single Level Apartment
Status	Active

Community Information

Address	303 10003 87 Avenue
Area	Edmonton
Subdivision	Strathcona
City	Edmonton
County	ALBERTA
Province	AB
Postal Code	T6E 2P1

Amenities

Amenities	On Street Parking, Intercom, See Remarks
Parking Spaces	1
Parking	Stall

Interior

Appliances	Dishwasher-Built-In, Microwave Hood Fan, Refrigerator, Stacked Washer/Dryer, Stove-Electric
Heating	Baseboard, Water
# of Stories	4
Stories	1
Has Basement	Yes
Basement	None, No Basement

Exterior

Exterior	Wood, Brick, Stucco
Exterior Features	Back Lane, Playground Nearby, Public Transportation, Schools, Shopping Nearby, See Remarks
Roof	Tar & Gravel
Construction	Wood, Brick, Stucco

Foundation Concrete Perimeter

School Information

Elementary King Edward School
Middle Allendale School
High Strathcona School

Additional Information

Date Listed April 26th, 2025
Days on Market 83
Zoning Zone 15
Condo Fee \$435

DATA IS DEEMED RELIABLE BUT IS NOT GUARANTEED ACCURATE BY THE REALTORS® ASSOCIATION OF EDMONTON. COPYRIGHT 2025 BY THE REALTORS® ASSOCIATION OF EDMONTON. ALL RIGHTS RESERVED.Trademarks are owned or controlled by the Canadian Real Estate Association (CREA) and identify real estate professionals who are members of CREA (REALTOR®, REALTORS®) and/or the quality of services they provide (MLS®, Multiple Listing Service®)
Listing information last updated on July 18th, 2025 at 12:17pm MDT