

## \$319,900 - 23 460 Hemingway Road, Edmonton

MLS® #E4433426

**\$319,900**

2 Bedroom, 2.50 Bathroom, 1,253 sqft

Condo / Townhouse on 0.00 Acres

The Hamptons, Edmonton, AB

Welcome to this gorgeous townhome in Mosaic Meadows, located in the desirable community of The Hamptons. This Beautiful 2 Storey end unit features 2 master bedrooms, 2.5 baths, double attached garage, and 1253 SqFt of open concept living space. As you enter the home you'll notice a nice fenced front porch with BBQ gas hookup, and lots of space for a patio set. The main floor includes a gorgeous kitchen with dark cabinetry, tile backsplash, quartz countertops, all stainless steel appliances, and plenty of counter space. Just steps from the kitchen is the dining area, and living room, with a 2 piece bath finishing off the main floor. Upstairs you'll find a very unique layout with 2 master bedrooms with walk in closets, ensuite bathrooms, and a flex space. Downstairs features a large storage space, laundry area, and access to the double attached garage. Close to all amenities West Edmonton has to offer, this home is move in ready with an immediate possession available, and low condo fees!

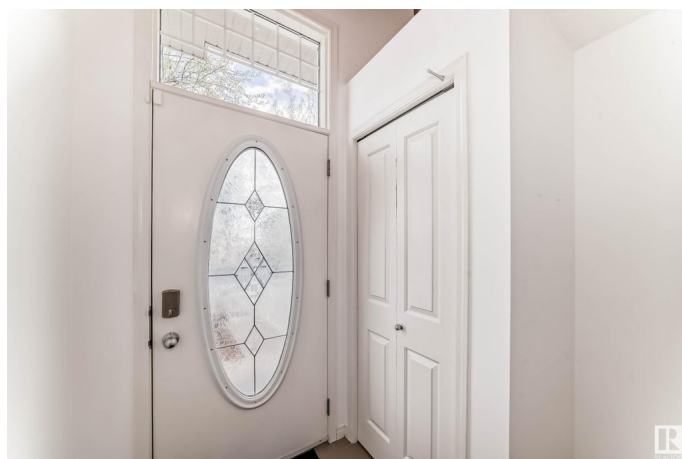
Built in 2012

### Essential Information

MLS® # E4433426

Price \$319,900

Bedrooms 2



Bathrooms	2.50
Full Baths	2
Half Baths	1
Square Footage	1,253
Acres	0.00
Year Built	2012
Type	Condo / Townhouse
Sub-Type	Townhouse
Style	2 Storey
Status	Active

### Community Information

Address	23 460 Hemingway Road
Area	Edmonton
Subdivision	The Hamptons
City	Edmonton
County	ALBERTA
Province	AB
Postal Code	T6M 0M5

### Amenities

Amenities	Front Porch, No Smoking Home, Parking-Visitor, Storage-In-Suite, Vinyl Windows, See Remarks
Parking Spaces	2
Parking	Double Garage Attached

### Interior

Interior Features	ensuite bathroom
Appliances	Dishwasher-Built-In, Dryer, Garage Control, Garage Opener, Microwave Hood Fan, Refrigerator, Stove-Electric, Washer, Window Coverings
Heating	Forced Air-1, Natural Gas
Stories	2
Has Basement	Yes
Basement	None, No Basement

### Exterior

Exterior	Wood, Stone, Vinyl
Exterior Features	Fenced, Golf Nearby, Landscaped, Playground Nearby, Public Transportation, Schools, Shopping Nearby

Roof	Asphalt Shingles
Construction	Wood, Stone, Vinyl
Foundation	Concrete Perimeter

**Additional Information**

Date Listed	April 30th, 2025
Days on Market	2
Zoning	Zone 58
HOA Fees	183.75
HOA Fees Freq.	Annually
Condo Fee	\$246

DATA IS DEEMED RELIABLE BUT IS NOT GUARANTEED ACCURATE BY THE REALTORS® ASSOCIATION OF EDMONTON. COPYRIGHT 2025 BY THE REALTORS® ASSOCIATION OF EDMONTON. ALL RIGHTS RESERVED.Trademarks are owned or controlled by the Canadian Real Estate Association (CREA) and identify real estate professionals who are members of CREA (REALTOR®, REALTORS®) and/or the quality of services they provide (MLS®, Multiple Listing Service®)

Listing information last updated on May 1st, 2025 at 9:47pm MDT