

## \$617,500 - 102 Juneau Way, St. Albert

MLS® #E4433746

**\$617,500**

4 Bedroom, 3.50 Bathroom, 1,647 sqft

Single Family on 0.00 Acres

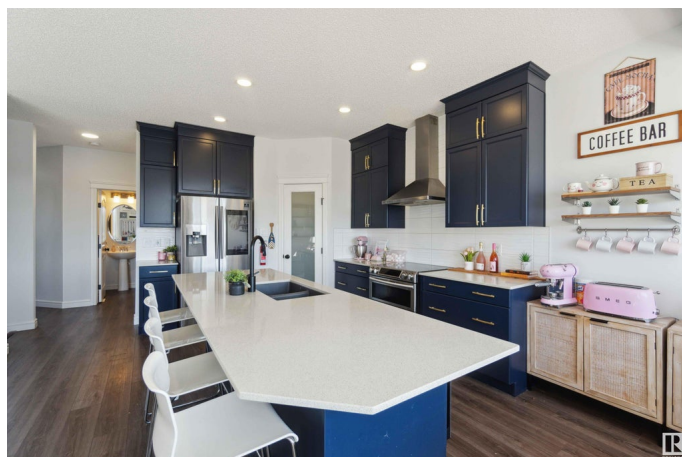
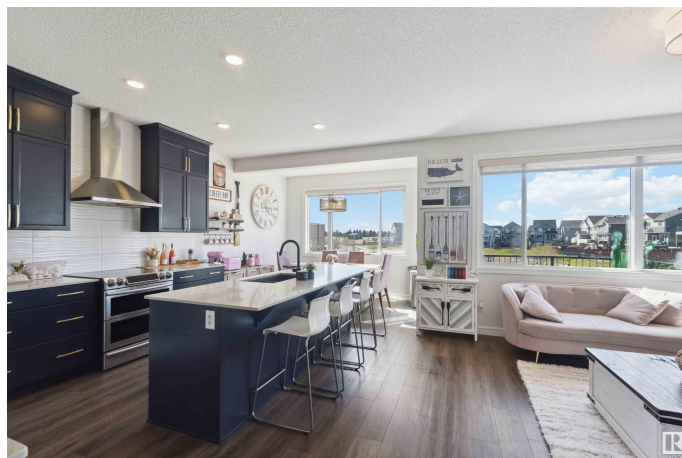
Jensen Lakes, St. Albert, AB

Welcome to your dream home in the sought-after community of Jensen Lakes – St. Albert's only lake community! This stunning 3-bedroom, 3-bath property offers over 2,300 sq ft of total living space, thoughtfully designed for modern living. Step inside to soaring 9 ft ceilings and admire the top-of-the-line royal blue cabinets that bring a touch of luxury and personality to the heart of the home. With 1,650 sq ft above grade, plus a fully finished walkout basement, you'll enjoy spacious areas for family and entertaining, including a cozy recreation room and an airy loft. The walkout leads directly to your backyard, where you'll find peaceful, scenic views as the property backs onto a tranquil pond – providing both beauty and privacy. Best of all, enjoy exclusive access to Jensen Lakes, offering beach days and year-round activities right in your neighborhood. This is lakeside living at its finest!

Built in 2019

### Essential Information

MLS® #	E4433746
Price	\$617,500
Bedrooms	4
Bathrooms	3.50
Full Baths	3



Half Baths	1
Square Footage	1,647
Acres	0.00
Year Built	2019
Type	Single Family
Sub-Type	Half Duplex
Style	2 Storey
Status	Active

### Community Information

Address	102 Juneau Way
Area	St. Albert
Subdivision	Jensen Lakes
City	St. Albert
County	ALBERTA
Province	AB
Postal Code	T8N 7V6

### Amenities

Amenities	Air Conditioner, Bar, Ceiling 9 ft., Deck, Fire Pit, Hot Water Natural Gas, Lake Privileges, No Animal Home, No Smoking Home, Patio, Vaulted Ceiling, Walkout Basement, HRV System
Parking	Double Garage Attached

### Interior

Interior Features	ensuite bathroom
Appliances	Dishwasher-Built-In, Dryer, Oven-Microwave, Refrigerator, Stove-Electric, Washer, Wine/Beverage Cooler
Heating	Forced Air-1, Natural Gas
Stories	2
Has Basement	Yes
Basement	Full, Finished

### Exterior

Exterior	Wood, Vinyl
Exterior Features	Playground Nearby, Public Transportation, Schools, Shopping Nearby
Roof	Asphalt Shingles
Construction	Wood, Vinyl
Foundation	Concrete Perimeter

**Additional Information**

Date Listed	May 1st, 2025
Days on Market	2
Zoning	Zone 24
HOA Fees	538.96
HOA Fees Freq.	Annually

DATA IS DEEMED RELIABLE BUT IS NOT GUARANTEED ACCURATE BY THE REALTORS® ASSOCIATION OF EDMONTON. COPYRIGHT 2025 BY THE REALTORS® ASSOCIATION OF EDMONTON. ALL RIGHTS RESERVED.Trademarks are owned or controlled by the Canadian Real Estate Association (CREA) and identify real estate professionals who are members of CREA (REALTOR®, REALTORS®) and/or the quality of services they provide (MLS®, Multiple Listing Service®)

Listing information last updated on May 3rd, 2025 at 5:17am MDT