

\$29,900 - Hwy 44 Rr 264, Rural Westlock County

MLS® #E4433806

\$29,900

0 Bedroom, 0.00 Bathroom,
Rural on 2.70 Acres

None, Rural Westlock County, AB

Located 4 kms south of Westlock Inn on Hwy 44 & RR 264 is this 2.70 acre parcel. Go south to RR 264. Turn onto it and you're basically there. Terrific place to display your wares or your business in Westlock. Zoned HC (Highway Commercial).

Essential Information

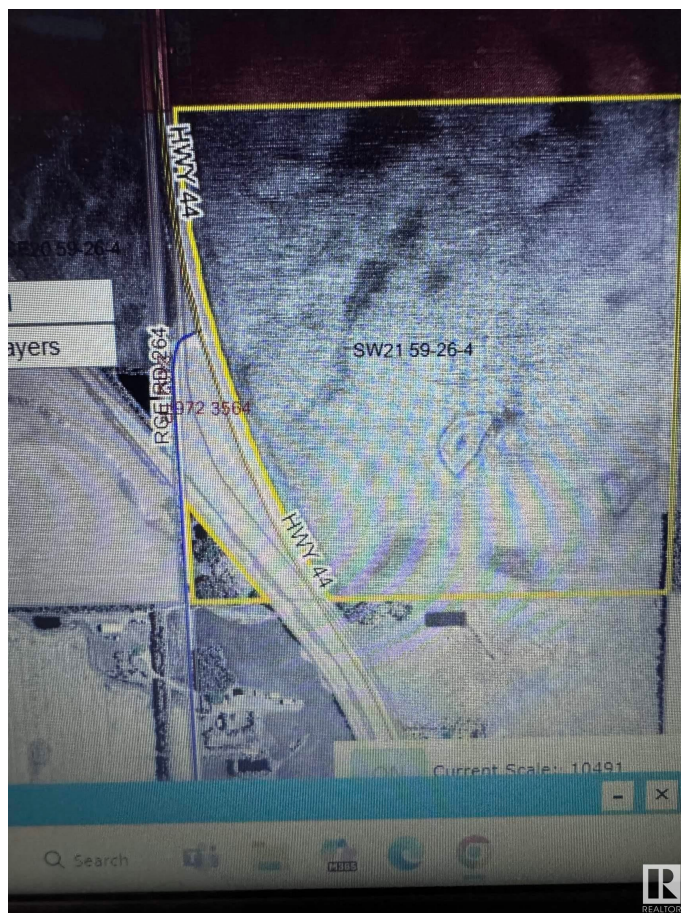
MLS® #	E4433806
Price	\$29,900
Bathrooms	0.00
Acres	2.70
Type	Rural
Sub-Type	Vacant Lot/Land
Status	Active

Community Information

Address	Hwy 44 Rr 264
Area	Rural Westlock County
Subdivision	None
City	Rural Westlock County
County	ALBERTA
Province	AB
Postal Code	T7P 2P6

Exterior

Exterior Features Treed Lot, See Remarks



Additional Information

Date Listed	April 29th, 2025
Days on Market	3
Zoning	Zone 70



DATA IS DEEMED RELIABLE BUT IS NOT GUARANTEED ACCURATE BY THE REALTORSÂ® ASSOCIATION OF EDMONTON. COPYRIGHT 2025 BY THE REALTORSÂ® ASSOCIATION OF EDMONTON. ALL RIGHTS RESERVED.Trademarks are owned or controlled by the Canadian Real Estate Association (CREA) and identify real estate professionals who are members of CREA (REALTORÂ®, REALTORSÂ®) and/or the quality of services they provide (MLSÂ®, Multiple Listing ServiceÂ®)

Listing information last updated on May 2nd, 2025 at 9:17pm MDT

