

\$645,000 - 6019 Cameron Close, Sherwood Park

MLS® #E4434065

\$645,000

4 Bedroom, 2.50 Bathroom, 2,272 sqft

Single Family on 0.00 Acres

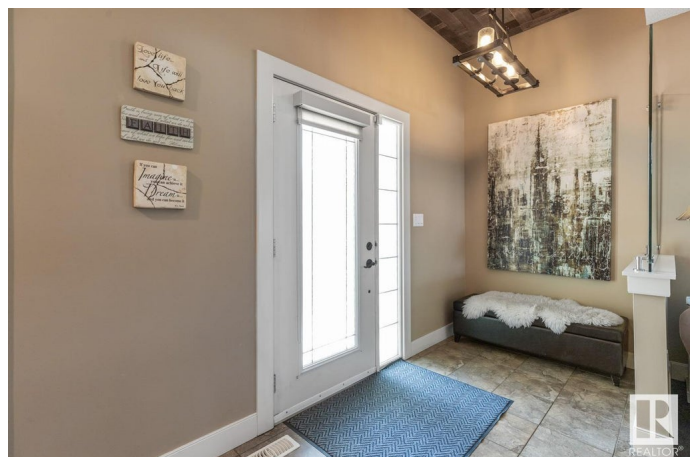
Lakeland Ridge, Sherwood Park, AB

Get ready to step out of the box with this beautifully unique family home bursting with COUNTRY CHIC charm, featuring 4 bedrooms & 2.5 baths. You are invited to find hardwood flooring throughout the open concept main floor with 9' ceilings. The kitchen offers plenty of cabinets, NEW stainless steel appliances, walk thru pantry & island that looks over the dining & living room with cozy fireplace. Den, main floor laundry & guest bath complement the layout. NEW carpet takes you upstairs to find a family sized bonus room with soaring 14' ceilings. LOVE the king sized primary suite with luxurious ensuite with soaker tub & walk in closet. 2 more bedrooms are both generous in size & 4pc bath complete the upper level. ENJOY the fully finished basement with family sized rec room, 4th bedroom, tons of storage & RI for future bath. Awesome fenced & landscaped yard with tiered, maintenance free deck, all just steps away from parks, trails, schools and shopping.

Built in 2009

Essential Information

MLS® #	E4434065
Price	\$645,000
Bedrooms	4
Bathrooms	2.50



Full Baths	2
Half Baths	1
Square Footage	2,272
Acres	0.00
Year Built	2009
Type	Single Family
Sub-Type	Detached Single Family
Style	2 Storey
Status	Active

Community Information

Address	6019 Cameron Close
Area	Sherwood Park
Subdivision	Lakeland Ridge
City	Sherwood Park
County	ALBERTA
Province	AB
Postal Code	T8H 0H6

Amenities

Amenities	Ceiling 9 ft., Deck, Vinyl Windows, See Remarks, 9 ft. Basement Ceiling
Parking	Double Garage Attached

Interior

Interior Features	ensuite bathroom
Appliances	Dishwasher-Built-In, Dryer, Microwave Hood Fan, Refrigerator, Storage Shed, Stove-Electric, Washer, Window Coverings
Heating	Forced Air-1, Natural Gas
Fireplace	Yes
Fireplaces	Tile Surround
Stories	3
Has Basement	Yes
Basement	Full, Finished

Exterior

Exterior	Wood, Vinyl
Exterior Features	Cul-De-Sac, Fenced, Landscaped, Playground Nearby, Public Transportation, Schools, Shopping Nearby, See Remarks
Roof	Asphalt Shingles

Construction	Wood, Vinyl
Foundation	Concrete Perimeter

School Information

Elementary	LAKELAND RIDGE
Middle	LAKELAND RIDGE
High	SALISBURY COMP

Additional Information

Date Listed	May 2nd, 2025
Days on Market	1
Zoning	Zone 25

DATA IS DEEMED RELIABLE BUT IS NOT GUARANTEED ACCURATE BY THE REALTORS® ASSOCIATION OF EDMONTON. COPYRIGHT 2025 BY THE REALTORS® ASSOCIATION OF EDMONTON. ALL RIGHTS RESERVED.Trademarks are owned or controlled by the Canadian Real Estate Association (CREA) and identify real estate professionals who are members of CREA (REALTOR®, REALTORS®) and/or the quality of services they provide (MLS®, Multiple Listing Service®)

Listing information last updated on May 3rd, 2025 at 9:02pm MDT