

\$454,900 - 1715 Keene Crescent, Edmonton

MLS® #E4435035

\$454,900

2 Bedroom, 2.50 Bathroom, 1,504 sqft

Condo / Townhouse on 0.00 Acres

Keswick Area, Edmonton, AB

This stunning corner townhouse in the highly desirable Keswick community offers the perfect blend of space, style, and convenience. Featuring 2 spacious bedrooms, 2.5 bathrooms, den, bonus room and a double garage, this home is designed for modern living. Vaulted ceilings and large windows flood the interior with natural light, creating an inviting and airy atmosphere. A versatile bonus room provides additional living space, while breathtaking views enhance the overall charm of the home. Ideally located, this townhouse is just minutes away from a Catholic school, Movati gym, the Tesoro shopping plaza, beautiful parks, and convenient transportation options. Everything you need is right at your doorstep. The best part? The seller is including all furniture and appliances, making this the perfect turnkey home for first-time buyers. Just bring your bags and move right in! Don't miss out on this incredible opportunity to live in one of Keswick's most sought-after communities.

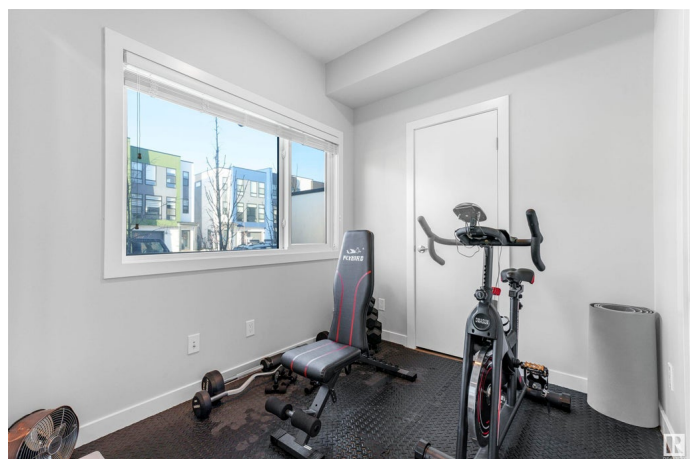
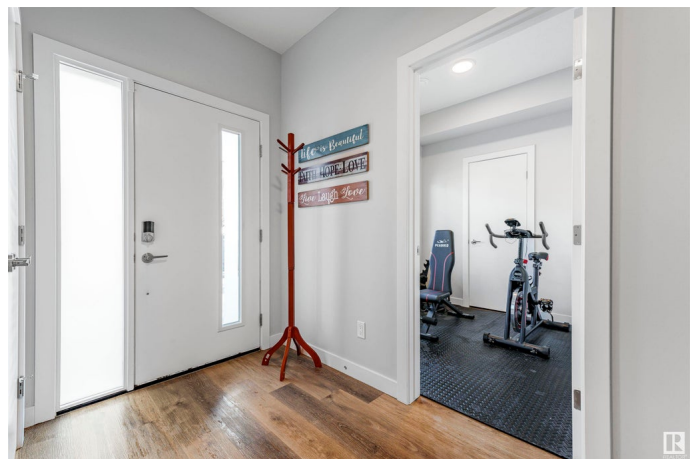
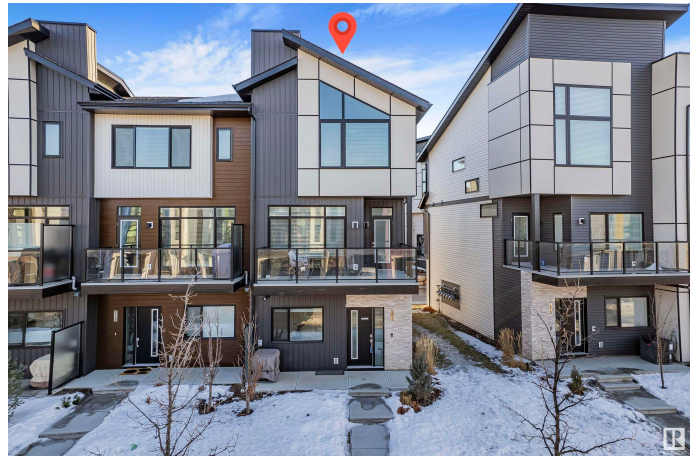
Built in 2020

Essential Information

MLS® # E4435035

Price \$454,900

Bedrooms 2



Bathrooms	2.50
Full Baths	2
Half Baths	1
Square Footage	1,504
Acres	0.00
Year Built	2020
Type	Condo / Townhouse
Sub-Type	Townhouse
Style	3 Storey
Status	Active

Community Information

Address	1715 Keene Crescent
Area	Edmonton
Subdivision	Keswick Area
City	Edmonton
County	ALBERTA
Province	AB
Postal Code	T6W 4H9

Amenities

Amenities	Air Conditioner, Ceiling 9 ft., No Animal Home, No Smoking Home, Vaulted Ceiling, HRV System
Parking	Double Garage Attached

Interior

Interior Features	ensuite bathroom
Appliances	Air Conditioning-Central, Dishwasher-Built-In, Dryer, Garage Control, Garage Opener, Hood Fan, Oven-Built-In, Refrigerator, Stove-Gas, Washer, Window Coverings, See Remarks
Heating	Forced Air-1, Natural Gas
Stories	3
Has Basement	Yes
Basement	None, No Basement

Exterior

Exterior	Wood, Stone, Stucco, Vinyl
Exterior Features	Airport Nearby, Commercial, Landscaped, Low Maintenance Landscape, Playground Nearby, Public Transportation, Schools, Shopping Nearby, See Remarks

Roof	Asphalt Shingles
Construction	Wood, Stone, Stucco, Vinyl
Foundation	Concrete Perimeter

Additional Information

Date Listed	May 7th, 2025
Days on Market	3
Zoning	Zone 56
Condo Fee	\$198

DATA IS DEEMED RELIABLE BUT IS NOT GUARANTEED ACCURATE BY THE REALTORS® ASSOCIATION OF EDMONTON. COPYRIGHT 2025 BY THE REALTORS® ASSOCIATION OF EDMONTON. ALL RIGHTS RESERVED.Trademarks are owned or controlled by the Canadian Real Estate Association (CREA) and identify real estate professionals who are members of CREA (REALTOR®, REALTORS®) and/or the quality of services they provide (MLS®, Multiple Listing Service®)

Listing information last updated on May 10th, 2025 at 9:17am MDT