

\$599,900 - 2904 33a Street, Edmonton

MLS® #E4435144

\$599,900

4 Bedroom, 3.00 Bathroom, 1,776 sqft

Single Family on 0.00 Acres

Silver Berry, Edmonton, AB

Welcome to 2904 33A Street NW in Edmonton! This beautifully maintained 4 bedroom, 3 bathroom home offers 1,776 sq ft of living space with luxury vinyl plank flooring throughout. The kitchen featuring a large island & walk-in pantry. Enjoy cozy nights by the gas fireplace in the spacious living room. Recent updates include a new hot water tank, appliance replacements, and the roof with many years left. The heated double attached garage adds year-round convenience. The fully finished basement adds valuable extra living space for a rec room, home office, or guest area. Step outside to a breathtaking, oversized reverse pie lot with a stunning 3-tier cedar deckâ€”perfect for relaxing or entertaining. The spacious backyard provides endless possibilities for gardening, play areas, or outdoor gatherings. Located in family-friendly Silver Berry with easy access to Whitemud Drive, Anthony Henday, schools, parks, transit, and shopping. All this home needs is YOU!

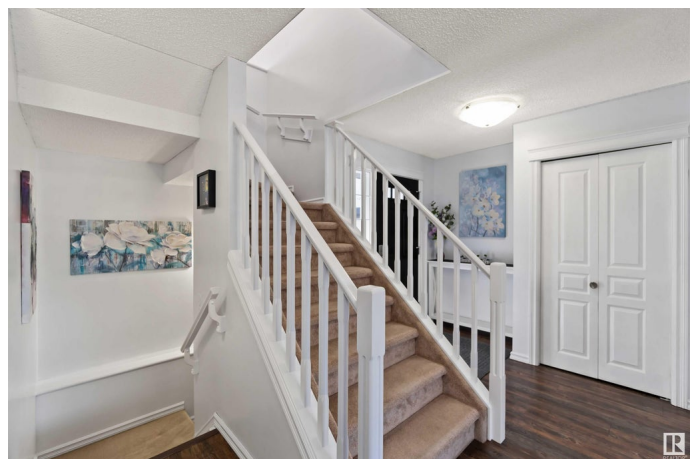
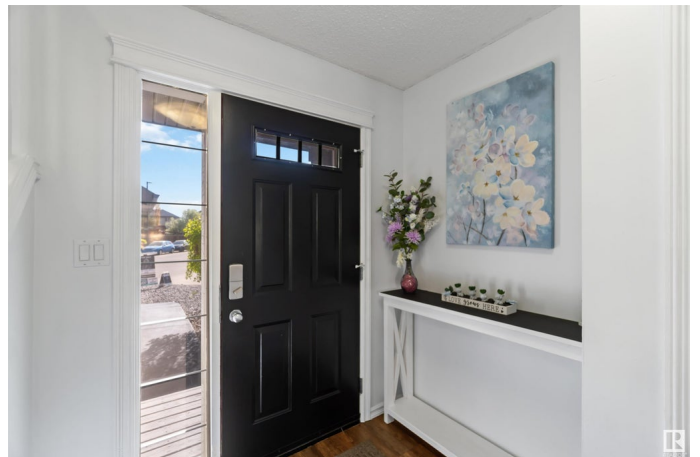
Built in 2002

Essential Information

MLS® # E4435144

Price \$599,900

Bedrooms 4



Bathrooms	3.00
Full Baths	3
Square Footage	1,776
Acres	0.00
Year Built	2002
Type	Single Family
Sub-Type	Detached Single Family
Style	2 Storey
Status	Active

Community Information

Address	2904 33a Street
Area	Edmonton
Subdivision	Silver Berry
City	Edmonton
County	ALBERTA
Province	AB
Postal Code	T6T 1V5

Amenities

Amenities	Deck, Detectors Smoke
Parking Spaces	4
Parking	Double Garage Attached

Interior

Interior Features	ensuite bathroom
Appliances	Dishwasher-Built-In, Dryer, Garage Control, Garage Opener, Hood Fan, Refrigerator, Stove-Electric, Washer, Window Coverings
Heating	Forced Air-1, Natural Gas
Fireplace	Yes
Fireplaces	Mantel, Tile Surround
Stories	3
Has Basement	Yes
Basement	Full, Finished

Exterior

Exterior	Wood, Vinyl
Exterior Features	Fenced, Flat Site, Landscaped, Park/Reserve, Public Transportation, Schools, Shopping Nearby

Roof	Asphalt Shingles
Construction	Wood, Vinyl
Foundation	Concrete Perimeter

School Information

Elementary	Bisset School
Middle	Kate Chegwin School
High	Francis Whiskeyjack School

Additional Information

Date Listed	May 8th, 2025
Days on Market	5
Zoning	Zone 30

DATA IS DEEMED RELIABLE BUT IS NOT GUARANTEED ACCURATE BY THE REALTORS® ASSOCIATION OF EDMONTON. COPYRIGHT 2025 BY THE REALTORS® ASSOCIATION OF EDMONTON. ALL RIGHTS RESERVED. Trademarks are owned or controlled by the Canadian Real Estate Association (CREA) and identify real estate professionals who are members of CREA (REALTOR®, REALTORS®) and/or the quality of services they provide (MLS®, Multiple Listing Service®)

Listing information last updated on May 13th, 2025 at 12:17pm MDT