

\$485,000 - 9146 73 Av Nw, Edmonton

MLS® #E4435462

\$485,000

4 Bedroom, 2.00 Bathroom, 832 sqft

Single Family on 0.15 Acres

Ritchie, Edmonton, Alberta

Ideally Located in the Heart of Ritchie! Just one block from Mill Creek Ravine and a short stroll to the vibrant Ritchie Market, this property offers the perfect blend of nature and urban lifestyle. Sitting on one of the larger subdividable lots in the areaâ€”50 ft x 130 ft (6,500 sq ft)â€”this is a rare opportunity in one of Edmontonâ€™s most desirable neighborhoods. Whether you're looking to build, hold, invest, or live, you simply canâ€™t beat this location! (id:36535)

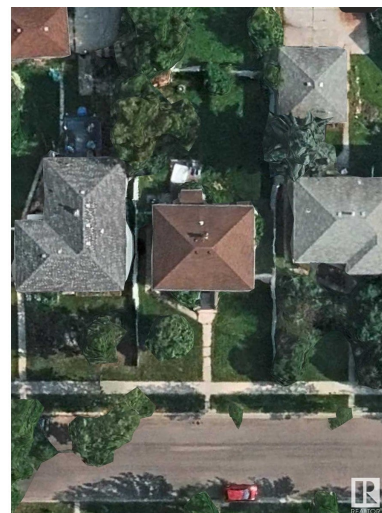
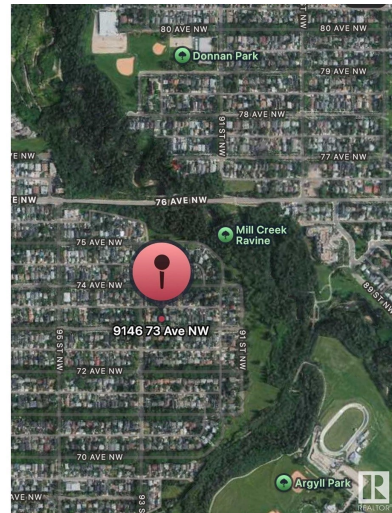
Built in 1955

Essential Information

Listing #	E4435462
Price	\$485,000
Bedrooms	4
Bathrooms	2.00
Square Footage	832
Acres	0.15
Year Built	1955
Type	Single Family
Sub-Type	Freehold
Style	Raised bungalow

Community Information

Address	9146 73 Av Nw
Subdivision	Ritchie
City	Edmonton
Province	Alberta



Postal Code T5H1B5

Amenities

Features Treed, See remarks, Flat site, Subdividable lot, Lane
Parking Stall

Interior

Appliances See remarks
Heating Forced air
of Stories 1
Has Basement Yes
Basement Type Full (Finished)
Basement Development Finished

Listing Details

Listing Office Courtesy Of Alexandra Krutzfeldt Of RE/MAX Elite



The trademarks MLS®, Multiple Listing Service® and the associated logos are owned by The Canadian Real Estate Association (CREA) and identify the quality of services provided by real estate professionals who are members of CREA. REALTOR®. Member of CREA and more.

Listing information last updated on May 16th, 2025 at 11:04pm MDT