

## \$624,900 - 22810 95a Avenue, Edmonton

MLS® #E4436087

**\$624,900**

3 Bedroom, 3.50 Bathroom, 2,034 sqft

Single Family on 0.00 Acres

Secord, Edmonton, AB

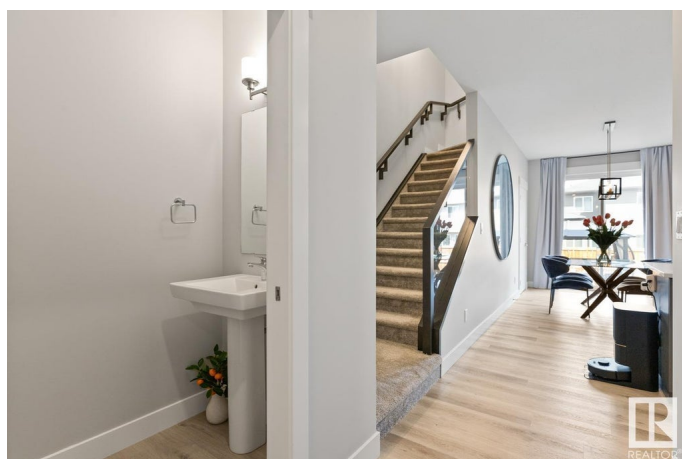
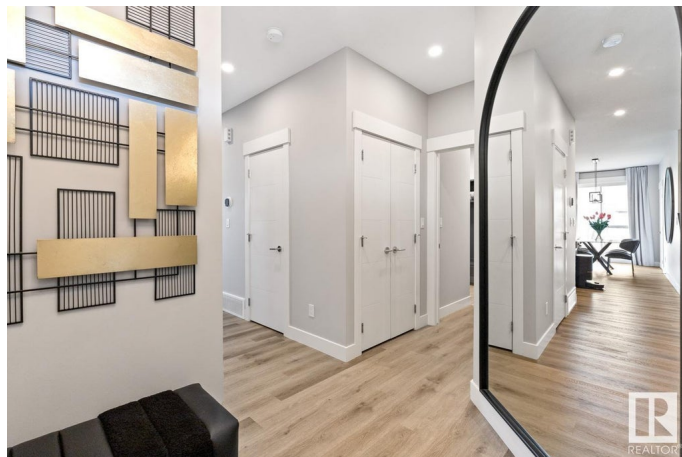
Welcome to this stunning custom-built home in the sought-after community of Secord! This beautifully designed 3-bedroom, 2.5-bath home is filled with high-end upgrades and thoughtful touches throughout. The main floor features a bright, open-concept layout ideal for both daily living and entertaining. The chef-inspired kitchen boasts upgraded stainless steel appliances, quartz countertops, a large island, a spacious walk-in pantry, and ample cabinet space. A massive custom fireplace anchors the spacious living area, while sleek glass railings add a modern, open feel. Upstairs, enjoy a large bonus room with tray ceilings, a vaulted-ceiling primary suite with a spa-like ensuite, two generous guest bedrooms, and the convenience of second-floor laundry. The basement offers a wide-open layout with endless possibilities—perfect for a home gym, media room, or additional living space. Conveniently located near schools, grocery stores, West Edmonton Mall, and a future recreation centre! WELCOME HOME

Built in 2022

### Essential Information

MLS® # E4436087

Price \$624,900



Bedrooms	3
Bathrooms	3.50
Full Baths	3
Half Baths	1
Square Footage	2,034
Acres	0.00
Year Built	2022
Type	Single Family
Sub-Type	Detached Single Family
Style	2 Storey
Status	Active

### Community Information

Address	22810 95a Avenue
Area	Edmonton
Subdivision	Secord
City	Edmonton
County	ALBERTA
Province	AB
Postal Code	T5T 7H5

### Amenities

Amenities	Ceiling 9 ft., Gazebo, Patio
Parking	Double Garage Attached

### Interior

Interior Features	ensuite bathroom
Appliances	Dishwasher-Built-In, Dryer, Garage Opener, Hood Fan, Refrigerator, Stove-Electric, Washer, Window Coverings
Heating	Forced Air-1, Natural Gas
Stories	3
Has Basement	Yes
Basement	Full, Finished

### Exterior

Exterior	Wood, Vinyl
Exterior Features	Fenced, Golf Nearby, Landscaped, Playground Nearby, Public Transportation, Schools, Shopping Nearby
Roof	Asphalt Shingles

Construction	Wood, Vinyl
Foundation	Concrete Perimeter

**Additional Information**

Date Listed	May 13th, 2025
Days on Market	2
Zoning	Zone 58

DATA IS DEEMED RELIABLE BUT IS NOT GUARANTEED ACCURATE BY THE REALTORS® ASSOCIATION OF EDMONTON. COPYRIGHT 2025 BY THE REALTORS® ASSOCIATION OF EDMONTON. ALL RIGHTS RESERVED.Trademarks are owned or controlled by the Canadian Real Estate Association (CREA) and identify real estate professionals who are members of CREA (REALTOR®, REALTORS®) and/or the quality of services they provide (MLS®, Multiple Listing Service®)

Listing information last updated on May 15th, 2025 at 5:32pm MDT