

\$619,900 - 2460 Ware Crescent, Edmonton

MLS® #E4436097

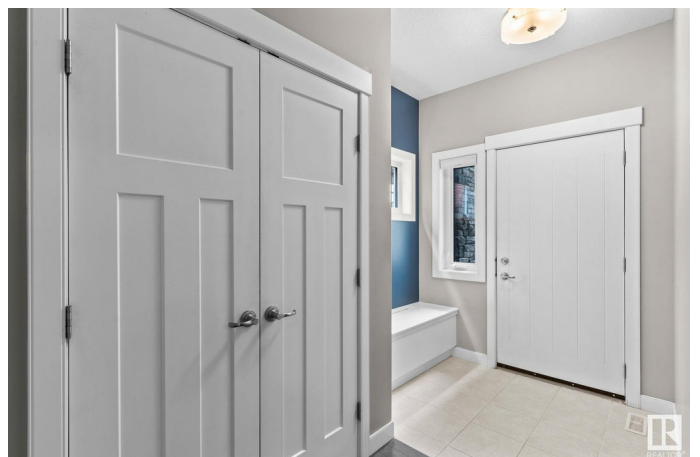
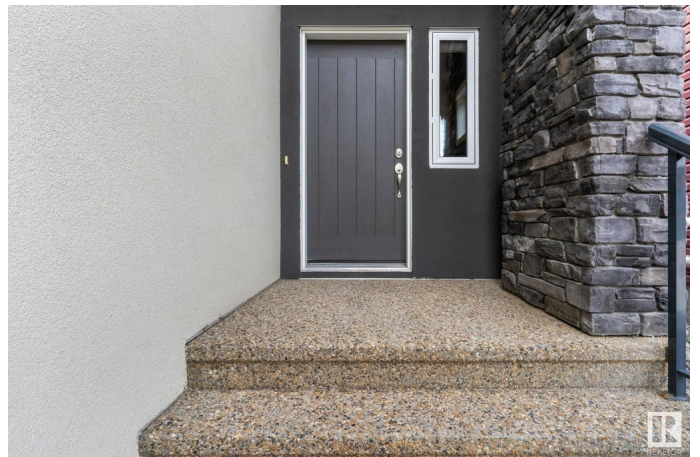
\$619,900

3 Bedroom, 2.50 Bathroom, 2,129 sqft

Single Family on 0.00 Acres

Windermere, Edmonton, AB

Welcome to 2460 Ware Crescent NW – a beautifully upgraded 2,051 sq ft two-storey home nestled in the sought-after community of One at Windermere. This modern, meticulously maintained home blends contemporary style with everyday comfort. Step inside to discover an open-concept main floor featuring a chef-inspired kitchen with gleaming quartz countertops, stainless steel appliances, a massive center island, and a corner pantry – perfect for entertaining or family meals. The spacious great room offers a cozy yet sleek stainless steel gas fireplace, and the large mudroom adds practical convenience. Upstairs, you'll find a bright bonus room ideal for movie nights or a home office, a second-floor laundry room, and three generous bedrooms. The elegant primary suite is a true retreat, boasting dual sinks, a relaxing soaker tub, and a fully tiled glass shower. Located minutes from shopping, schools, parks, and trails, this stunning home won't last long. Don't miss your chance to live in one of Edmonton's premier c



Built in 2013

Essential Information

MLS® # E4436097

Price \$619,900

Bedrooms	3
Bathrooms	2.50
Full Baths	2
Half Baths	1
Square Footage	2,129
Acres	0.00
Year Built	2013
Type	Single Family
Sub-Type	Detached Single Family
Style	2 Storey
Status	Active

Community Information

Address	2460 Ware Crescent
Area	Edmonton
Subdivision	Windermere
City	Edmonton
County	ALBERTA
Province	AB
Postal Code	T6W 2M7

Amenities

Amenities	Air Conditioner, Closet Organizers, Deck
Parking Spaces	4
Parking	Double Garage Attached

Interior

Interior Features	ensuite bathroom
Appliances	Air Conditioning-Central, Dishwasher-Built-In, Dryer, Garage Control, Garage Opener, Microwave Hood Fan, Refrigerator, Stove-Electric, Washer, Window Coverings
Heating	Forced Air-1, Natural Gas
Fireplace	Yes
Fireplaces	Glass Door
Stories	2
Has Basement	Yes
Basement	Full, Unfinished

Exterior

Exterior	Wood, Stone, Stucco
Exterior Features	Fenced, Golf Nearby, No Back Lane, Playground Nearby, Schools, Shopping Nearby
Roof	Asphalt Shingles
Construction	Wood, Stone, Stucco
Foundation	Concrete Perimeter

School Information

Elementary	Cst D Woodall, St John XXIII
Middle	Riverbend, St John XXIII
High	Lillian O, MMM

Additional Information

Date Listed	May 13th, 2025
Days on Market	12
Zoning	Zone 56

DATA IS DEEMED RELIABLE BUT IS NOT GUARANTEED ACCURATE BY THE REALTORS® ASSOCIATION OF EDMONTON. COPYRIGHT 2025 BY THE REALTORS® ASSOCIATION OF EDMONTON. ALL RIGHTS RESERVED. Trademarks are owned or controlled by the Canadian Real Estate Association (CREA) and identify real estate professionals who are members of CREA (REALTOR®, REALTORS®) and/or the quality of services they provide (MLS®, Multiple Listing Service®)

Listing information last updated on May 25th, 2025 at 3:17am MDT