

\$570,888 - 524 Ormsby Road, Edmonton

MLS® #E4437945

\$570,888

4 Bedroom, 3.50 Bathroom, 2,268 sqft

Single Family on 0.00 Acres

Ormsby Place, Edmonton, AB

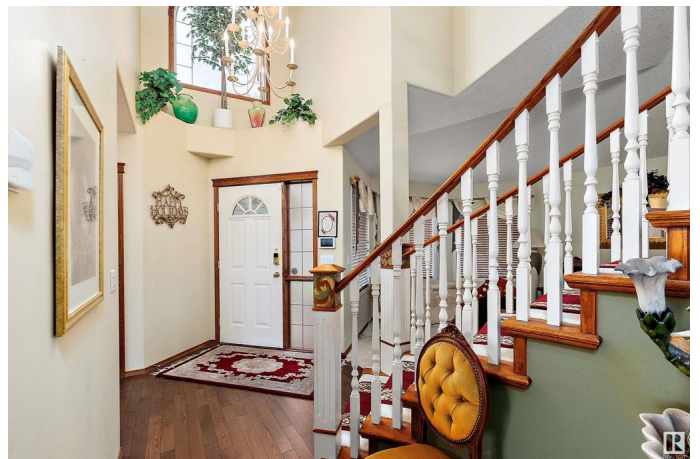
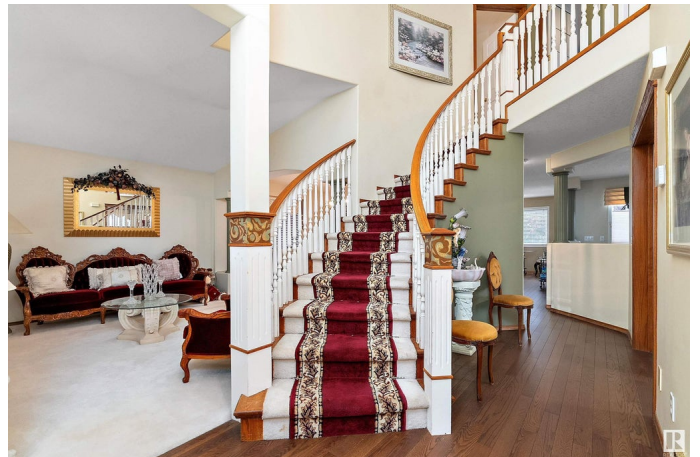
Elegant, upgraded & move-in ready! This beautifully renovated 4-bed, 3.5-bath home offers over 3,300 sq ft of refined living space. Be greeted by a grand foyer with soaring ceilings & a curved staircase. The chef's kitchen boasts granite counters, rich cabinetry, stainless steel appliances & a massive island—ideal for entertaining. Bright living & dining areas flow effortlessly. Upstairs, the spacious primary suite features a walk-in closet & spa-inspired ensuite. The fully finished basement is a showstopper: large rec room, home gym, guest bedroom, stylish 3-pc bath, wet bar with pendant lighting, & projector screen. Updated bathrooms, new flooring, central A/C, cozy gas fireplace & oversized garage provide comfort. Outdoors, enjoy a private landscaped yard with mature flowering trees, lamppost lighting & patio seating. Quiet Ormsby Place location near parks, top-rated schools, shopping, transit & minutes to Anthony Henday & Whitemud Dr. —an ideal family home! A RARE OPPORTUNITY YOU CANNOT MISS! Hurry!

Built in 1997

Essential Information

MLS® # E4437945

Price \$570,888



Bedrooms	4
Bathrooms	3.50
Full Baths	3
Half Baths	1
Square Footage	2,268
Acres	0.00
Year Built	1997
Type	Single Family
Sub-Type	Detached Single Family
Style	2 Storey
Status	Active

Community Information

Address	524 Ormsby Road
Area	Edmonton
Subdivision	Ormsby Place
City	Edmonton
County	ALBERTA
Province	AB
Postal Code	T5T 6G8

Amenities

Amenities	Air Conditioner, Bar, Closet Organizers, Deck, Parking-Extra, See Remarks
Parking	Double Garage Attached

Interior

Interior Features	ensuite bathroom
Appliances	Dishwasher-Built-In, Dryer, Garage Control, Garage Opener, Microwave Hood Fan, Refrigerator, Stove-Electric, Washer
Heating	Forced Air-1, Natural Gas
Stories	3
Has Basement	Yes
Basement	Full, Finished

Exterior

Exterior	Wood, Vinyl
Exterior Features	Fenced, Flat Site, Landscaped, Playground Nearby, Public Transportation, Schools, Shopping Nearby, See Remarks

Roof	Asphalt Shingles
Construction	Wood, Vinyl
Foundation	Concrete Perimeter

School Information

Elementary	Ormsby School (K-6)
Middle	S. Bruce Smith School
High	Jasper Place School

Additional Information

Date Listed	May 22nd, 2025
Days on Market	9
Zoning	Zone 20

DATA IS DEEMED RELIABLE BUT IS NOT GUARANTEED ACCURATE BY THE REALTORS® ASSOCIATION OF EDMONTON. COPYRIGHT 2025 BY THE REALTORS® ASSOCIATION OF EDMONTON. ALL RIGHTS RESERVED. Trademarks are owned or controlled by the Canadian Real Estate Association (CREA) and identify real estate professionals who are members of CREA (REALTOR®, REALTORS®) and/or the quality of services they provide (MLS®, Multiple Listing Service®)

Listing information last updated on May 31st, 2025 at 12:18pm MDT