

# \$1,850,000 - 105 161 Ave Nw, Edmonton

MLS® #E4438534

**\$1,850,000**

0 Bedroom, 0.00 Bathroom,  
Single Family on 0.00 Acres

Rural North East South Sturgeon, Edmonton,  
AB

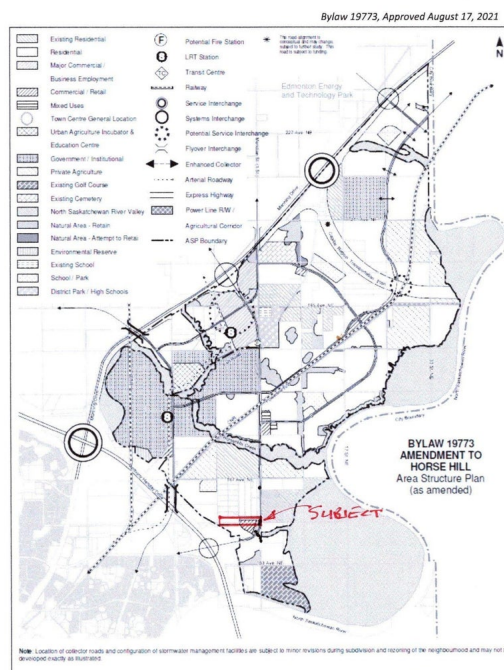
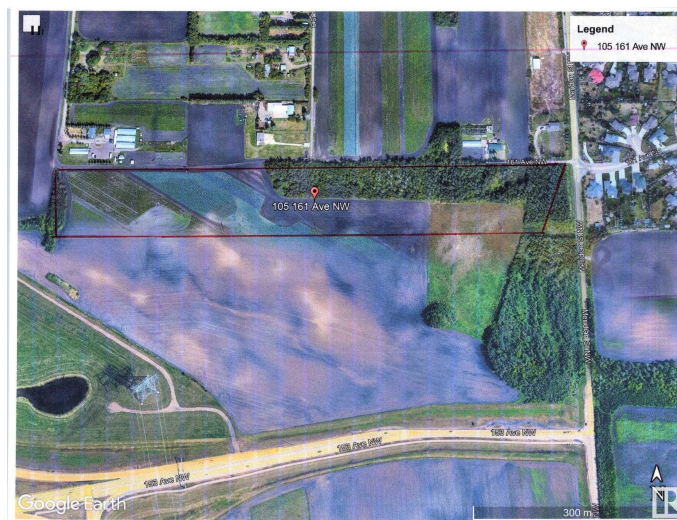
This 19.25 acre parcel is an excellent investment opportunity for future residential development. it is situated within the future Horse Hill Neighbourhood 1B which is part of the Horse Hill Area Structure Plan. Residential development is currently underway across from this parcel. It is located across from the Quarry Ridge residential community and minutes away from both the Quarry Golf Club. Excess to Meridian Street and 153 ave connecting to Anthony Henday Freeway.

## Essential Information

|           |                 |
|-----------|-----------------|
| MLS® #    | E4438534        |
| Price     | \$1,850,000     |
| Bathrooms | 0.00            |
| Acres     | 0.00            |
| Type      | Single Family   |
| Sub-Type  | Vacant Lot/Land |
| Status    | Active          |

## Community Information

|             |                                 |
|-------------|---------------------------------|
| Address     | 105 161 Ave Nw                  |
| Area        | Edmonton                        |
| Subdivision | Rural North East South Sturgeon |
| City        | Edmonton                        |
| County      | ALBERTA                         |



|             |         |
|-------------|---------|
| Province    | AB      |
| Postal Code | T5Y 6M2 |

**Exterior**

|                   |           |
|-------------------|-----------|
| Exterior Features | Flat Site |
|-------------------|-----------|

**Additional Information**

|                |                |
|----------------|----------------|
| Date Listed    | May 23rd, 2025 |
| Days on Market | 84             |
| Zoning         | Zone 51        |

DATA IS DEEMED RELIABLE BUT IS NOT GUARANTEED ACCURATE BY THE REALTORS® ASSOCIATION OF EDMONTON. COPYRIGHT 2025 BY THE REALTORS® ASSOCIATION OF EDMONTON. ALL RIGHTS RESERVED.Trademarks are owned or controlled by the Canadian Real Estate Association (CREA) and identify real estate professionals who are members of CREA (REALTOR®, REALTORS®) and/or the quality of services they provide (MLS®, Multiple Listing Service®)

Listing information last updated on August 15th, 2025 at 3:17pm MDT