

\$525,000 - 508 10108 125 Street, Edmonton

MLS® #E4439560

\$525,000

2 Bedroom, 2.00 Bathroom, 1,485 sqft

Condo / Townhouse on 0.00 Acres

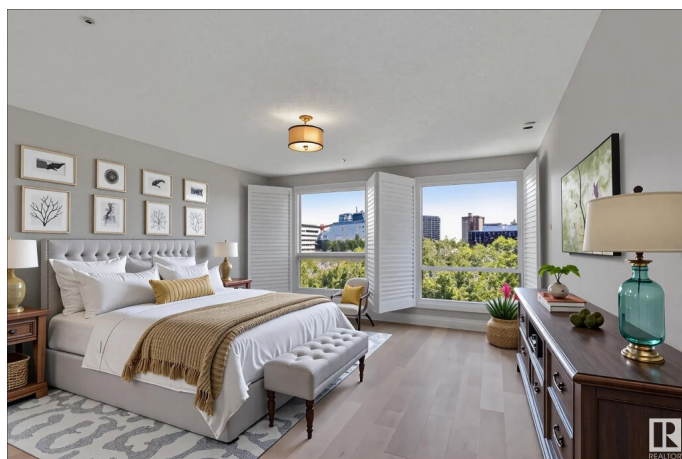
Westmount, Edmonton, AB

Wake up to river valley and downtown views in this knockout HighStreet condo that brings style, space, and serious convenience. Steps from coffee, galleries, eats, and everything cool on 124 Streetâ€™not to mention a straight shot to the U of A. Inside, itâ€™s all about the vibes: 9-ft ceilings, engineered hardwood, a cozy corner gas fireplace, and an induction stove for your inner chef. The open layout is perfect for entertaining or just flexing your fabulous taste. The spacious primary suite features a steam shower, soaker tub, walk-in closet, and is large enough for a king sized bed. The second bedroom is tucked away for privacy, with California closets in both. There's also a large den/office, extra storage, and did I mention the custom wood shutters? Two heated underground stalls, side-by-side by the elevator, making life easy. Sunshine, skyline, and a touch of classyâ€™this condo has it all. Please note that some photos have been virtually staged.

Built in 2002

Essential Information

MLS® #	E4439560
Price	\$525,000
Bedrooms	2
Bathrooms	2.00



Full Baths	2
Square Footage	1,485
Acres	0.00
Year Built	2002
Type	Condo / Townhouse
Sub-Type	Apartment High Rise
Style	Single Level Apartment
Status	Active

Community Information

Address	508 10108 125 Street
Area	Edmonton
Subdivision	Westmount
City	Edmonton
County	ALBERTA
Province	AB
Postal Code	T5N 4B6

Amenities

Amenities	Air Conditioner, Ceiling 9 ft., Closet Organizers, Exercise Room, No Animal Home, No Smoking Home, Secured Parking, Sprinkler System-Fire, Storage-In-Suite, Vinyl Windows, Storage Cage
Parking Spaces	2
Parking	Double Indoor, Heated, Underground

Interior

Interior Features	ensuite bathroom
Appliances	Air Conditioning-Central, Dishwasher-Built-In, Dryer, Hood Fan, Refrigerator, Stove-Electric, Washer, Window Coverings
Heating	Forced Air-1, Natural Gas
Fireplace	Yes
Fireplaces	Corner
# of Stories	10
Stories	1
Has Basement	Yes
Basement	None, No Basement

Exterior

Exterior	Concrete, Brick, Hardie Board Siding
----------	--------------------------------------

Exterior Features	Backs Onto Park/Trees, Golf Nearby, Hillside, Park/Reserve, Public Transportation, Ravine View, River Valley View, Shopping Nearby, View City, View Downtown
Roof	Tar & Gravel
Construction	Concrete, Brick, Hardie Board Siding
Foundation	Concrete Perimeter

Additional Information

Date Listed	May 30th, 2025
Days on Market	8
Zoning	Zone 07
Condo Fee	\$1,100

DATA IS DEEMED RELIABLE BUT IS NOT GUARANTEED ACCURATE BY THE REALTORS® ASSOCIATION OF EDMONTON. COPYRIGHT 2025 BY THE REALTORS® ASSOCIATION OF EDMONTON. ALL RIGHTS RESERVED. Trademarks are owned or controlled by the Canadian Real Estate Association (CREA) and identify real estate professionals who are members of CREA (REALTOR®, REALTORS®) and/or the quality of services they provide (MLS®, Multiple Listing Service®)

Listing information last updated on June 6th, 2025 at 10:32pm MDT