

\$289,888 - 29 171 Brintnell Boulevard, Edmonton

MLS® #E4439851

\$289,888

3 Bedroom, 2.00 Bathroom, 1,249 sqft
Condo / Townhouse on 0.00 Acres

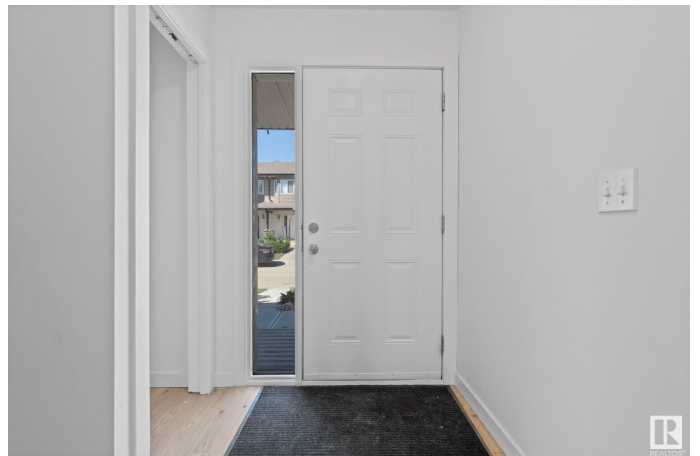
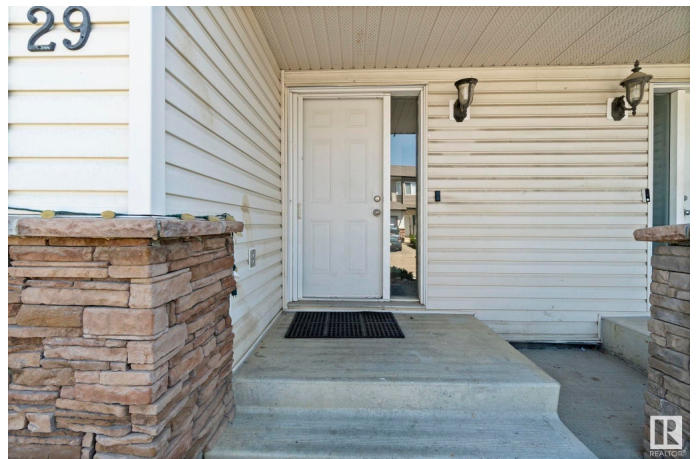
Brintnell, Edmonton, AB

BEST VALUE IN BRINTNELL!! ATTENTION FIRST-TIME BUYERS, INVESTORS AND EMPTY NESTERS! Features include spacious front entry, closet & access to single attached garage, Open living room, kitchen and dining area complete with corner gas fireplace & 2 pc bath. Access to your private deck is situated off the kitchen and has natural gas hook up. 2nd level floor plan includes a large primary bedroom c/w walk-in closet, 2 additional good sized bedrooms & a large 4 pc bath. Head downstairs to the family room and you will see a very elegant, beautifully finished space. The walkout basement also houses the laundry area & utility room. Brintnell Landing is conveniently located to all amenities, including a fabulous park/spray park just outside the entrance to the complex. Wow! Carefree condo living with a very affordable condo fee. **WELCOME HOME!!**

Built in 2006

Essential Information

MLS® #	E4439851
Price	\$289,888
Bedrooms	3
Bathrooms	2.00
Full Baths	1
Half Baths	2



Square Footage	1,249
Acres	0.00
Year Built	2006
Type	Condo / Townhouse
Sub-Type	Townhouse
Style	2 Storey
Status	Active

Community Information

Address	29 171 Brintnell Boulevard
Area	Edmonton
Subdivision	Brintnell
City	Edmonton
County	ALBERTA
Province	AB
Postal Code	T5Y 0C6

Amenities

Amenities	Deck
Parking	Front Drive Access, Single Garage Attached

Interior

Appliances	Dishwasher-Built-In, Dryer, Garage Control, Garage Opener, Hood Fan, Refrigerator, Stove-Electric, Washer
Heating	Forced Air-1, Natural Gas
Stories	3
Has Basement	Yes
Basement	Full, Finished

Exterior

Exterior	Wood, Stone, Vinyl
Exterior Features	Playground Nearby, Shopping Nearby
Roof	Asphalt Shingles
Construction	Wood, Stone, Vinyl
Foundation	Concrete Perimeter

Additional Information

Date Listed	June 1st, 2025
Days on Market	15

Zoning	Zone 03
Condo Fee	\$321

DATA IS DEEMED RELIABLE BUT IS NOT GUARANTEED ACCURATE BY THE REALTORS® ASSOCIATION OF EDMONTON. COPYRIGHT 2025 BY THE REALTORS® ASSOCIATION OF EDMONTON. ALL RIGHTS RESERVED. Trademarks are owned or controlled by the Canadian Real Estate Association (CREA) and identify real estate professionals who are members of CREA (REALTOR®, REALTORS®) and/or the quality of services they provide (MLS®, Multiple Listing Service®)

Listing information last updated on June 16th, 2025 at 11:02am MDT