

Courtesy Of Tom M Allison Of Real Broker

\$485,000 - 21015 130 Avenue, Edmonton

MLS® #E4440449

\$485,000

3 Bedroom, 2.50 Bathroom, 1,651 sqft

Single Family on 0.00 Acres

Trumpeter Area, Edmonton, AB

Welcome to this stunning 1651 sq. ft. 2-storey home, thoughtfully designed for both style and function. Step inside to soaring 12-foot ceilings in the living room, paired with floor-to-ceiling windows that flood the space with natural light. The open-concept main floor offers a bright white kitchen with granite countertops, ample cabinetry, and a spacious dining area that overlooks the living room—perfect for entertaining. Upstairs you'll find three generously sized bedrooms, including a beautiful primary suite with a walk-in closet and a private 4-piece ensuite. A convenient upstairs laundry room, accessible directly from the primary bedroom, adds everyday ease. The unfinished basement offers endless potential with rare 12-foot ceilings, giving you the opportunity to create the ultimate rec room, home gym, or guest space. The back yard has a composite deck, is fully fenced, and has a double detached garage and central A/C. Located within walking distance shops, parks, daycares and more!

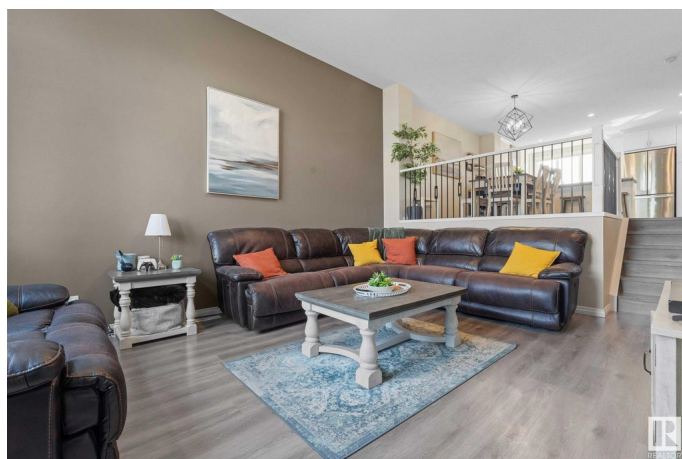
Built in 2021

Essential Information

MLS® # E4440449

Price \$485,000

Bedrooms 3



Bathrooms	2.50
Full Baths	2
Half Baths	1
Square Footage	1,651
Acres	0.00
Year Built	2021
Type	Single Family
Sub-Type	Detached Single Family
Style	2 Storey
Status	Active

Community Information

Address	21015 130 Avenue
Area	Edmonton
Subdivision	Trumpeter Area
City	Edmonton
County	ALBERTA
Province	AB
Postal Code	T5S 0N6

Amenities

Amenities	Air Conditioner, See Remarks
Parking	Double Garage Detached

Interior

Interior Features	ensuite bathroom
Appliances	Air Conditioning-Central, Dishwasher-Built-In, Dryer, Refrigerator, Stove-Electric, Washer, Window Coverings
Heating	Forced Air-1, Natural Gas
Stories	2
Has Basement	Yes
Basement	Full, Unfinished

Exterior

Exterior	Wood, Stone, Vinyl
Exterior Features	Fenced, Flat Site, Golf Nearby, Schools, Shopping Nearby
Roof	Asphalt Shingles
Construction	Wood, Stone, Vinyl
Foundation	Concrete Perimeter

Additional Information

Date Listed June 5th, 2025
Days on Market 12
Zoning Zone 59

DATA IS DEEMED RELIABLE BUT IS NOT GUARANTEED ACCURATE BY THE REALTORS® ASSOCIATION OF EDMONTON. COPYRIGHT 2025 BY THE REALTORS® ASSOCIATION OF EDMONTON. ALL RIGHTS RESERVED.Trademarks are owned or controlled by the Canadian Real Estate Association (CREA) and identify real estate professionals who are members of CREA (REALTOR®, REALTORS®) and/or the quality of services they provide (MLS®, Multiple Listing Service®)
Listing information last updated on June 16th, 2025 at 11:47pm MDT