

\$524,900 - 53550 Rge Road 220, Rural Strathcona County

MLS® #E4440962

\$524,900

4 Bedroom, 2.00 Bathroom, 1,018 sqft

Rural on 11.08 Acres

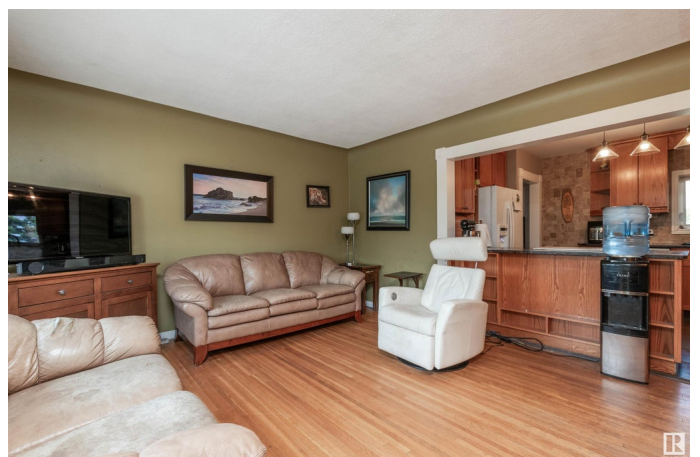
None, Rural Strathcona County, AB

Over 11 acres outside of a subdivision with easy access to Sherwood Park and Fort Saskatchewan. 3+1 bedroom bungalow on a quiet country road. Home has had many upgrades over the years including most windows, shingles, kitchen with granite tops, a renovated main and downstairs bathroom. Original hardwood upstairs. The livingroom leads to a huge east facing deck. basement is mostly finished with 1 large bedroom with a large walk-in closet, a rec room, utility room and a 3 piece bathroom. Outside are a fenced backyard, a double garage and single garage. great for a business or potential horse set up. Zoned RA Residential/Agriculture.

Built in 1956

Essential Information

MLS® #	E4440962
Price	\$524,900
Bedrooms	4
Bathrooms	2.00
Full Baths	2
Square Footage	1,018
Acres	11.08
Year Built	1956
Type	Rural



Sub-Type	Detached Single Family
Style	Bungalow
Status	Active

Community Information

Address	53550 Rge Road 220
Area	Rural Strathcona County
Subdivision	None
City	Rural Strathcona County
County	ALBERTA
Province	AB
Postal Code	T8E 2B6

Amenities

Features	Hot Water Natural Gas, No Smoking Home
----------	--

Interior

Heating	Forced Air-1, Natural Gas
Stories	2
Has Basement	Yes
Basement	Full, Finished

Exterior

Exterior	Wood
Exterior Features	Cross Fenced, Fenced, Fruit Trees/Shrubs
Construction	Wood
Foundation	Preserved Wood

Additional Information

Date Listed	June 6th, 2025
Days on Market	57
Zoning	Zone 80

DATA IS DEEMED RELIABLE BUT IS NOT GUARANTEED ACCURATE BY THE REALTORS® ASSOCIATION OF EDMONTON. COPYRIGHT 2025 BY THE REALTORS® ASSOCIATION OF EDMONTON. ALL RIGHTS RESERVED. Trademarks are owned or controlled by the Canadian Real Estate Association (CREA) and identify real estate professionals who are members of CREA (REALTOR®, REALTORS®) and/or the quality of services they provide (MLS®, Multiple Listing Service®)

Listing information last updated on August 2nd, 2025 at 1:02am MDT