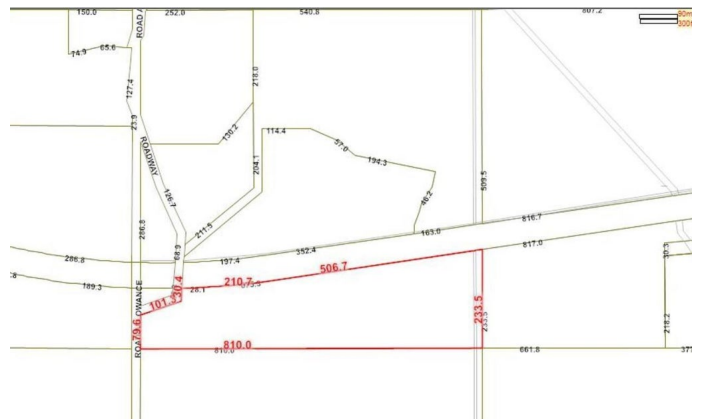


\$4,799,990

None, Rural Parkland County, AB

MLS® #	E4441582
Price	\$4,799,990
Bathrooms	0.00
Acres	72.70
Type	Rural
Sub-Type	Vacant Lot/Land
Status	Active

Address	52419 Range Road 12
Area	Rural Parkland County
Subdivision	None
City	Rural Parkland County
County	ALBERTA
Province	AB
Postal Code	T7Z 2S1



Exterior

Exterior Features See Remarks

Additional Information

Date Listed June 10th, 2025
Days on Market 93
Zoning Zone 91

DATA IS DEEMED RELIABLE BUT IS NOT GUARANTEED ACCURATE BY THE REALTORS® ASSOCIATION OF EDMONTON. COPYRIGHT 2025 BY THE REALTORS® ASSOCIATION OF EDMONTON. ALL RIGHTS RESERVED.Trademarks are owned or controlled by the Canadian Real Estate Association (CREA) and identify real estate professionals who are members of CREA (REALTOR®, REALTORS®) and/or the quality of services they provide (MLS®, Multiple Listing Service®)
Listing information last updated on September 11th, 2025 at 5:02pm MDT