

\$960,000 - Na, Rural Lac Ste. Anne County

MLS® #E4441726

\$960,000

0 Bedroom, 0.00 Bathroom,
Industrial on 0.00 Acres

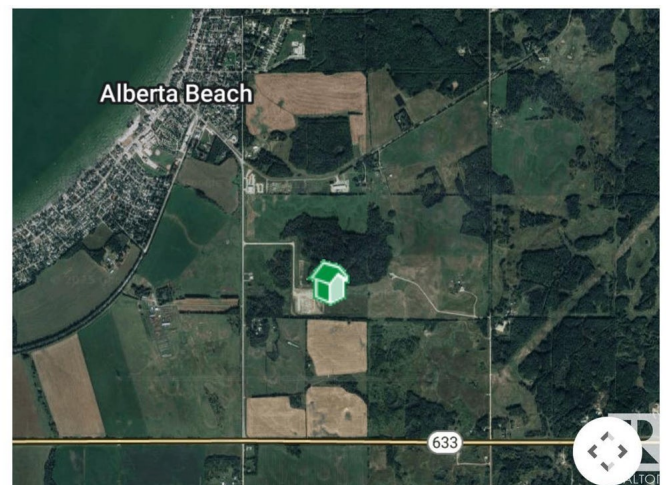
Lac Ste Anne, Rural Lac Ste. Anne County,
AB

Welcome to Lac St Anne County! This 59.8 acre parcel of Industrial Zoned land is located along Range Road 32, south of Alberta Beach, just north of Highway 633 and just 5 minutes west of Highway 43. Access to the site includes paved roadways to the main driveway. What can be done on this site? Potential use can include manufacturing, industrial plant and warehousing. This property includes clearing of approximately 6 acres for building footings, private road construction to the property off Range Road 32, storm water pond construction and public road construction. There is a municipal water transfer station on a lot west of the property along Range Road 32 with future potential to have municipal services onsite. Possibilities for future subdivision. The property is partially treed and surrounded by agricultural and industrial properties and sits adjacent to the community of Alberta Beach.

Built in 2025

Essential Information

MLS® #	E4441726
Price	\$960,000
Bathrooms	0.00
Acres	0.00



Year Built	2025
Type	Industrial
Status	Active

Community Information

Address	Na
Area	Rural Lac Ste. Anne County
Subdivision	Lac Ste Anne
City	Rural Lac Ste. Anne County
County	ALBERTA
Province	AB
Postal Code	T0E 0A0

Exterior

Exterior	See Remarks
Construction	See Remarks

Additional Information

Date Listed	June 10th, 2025
Days on Market	6
Zoning	Zone 71

DATA IS DEEMED RELIABLE BUT IS NOT GUARANTEED ACCURATE BY THE REALTORS® ASSOCIATION OF EDMONTON. COPYRIGHT 2025 BY THE REALTORS® ASSOCIATION OF EDMONTON. ALL RIGHTS RESERVED. Trademarks are owned or controlled by the Canadian Real Estate Association (CREA) and identify real estate professionals who are members of CREA (REALTOR®, REALTORS®) and/or the quality of services they provide (MLS®, Multiple Listing Service®)

Listing information last updated on June 16th, 2025 at 1:02pm MDT