

\$379,000 - 9322 168 Street, Edmonton

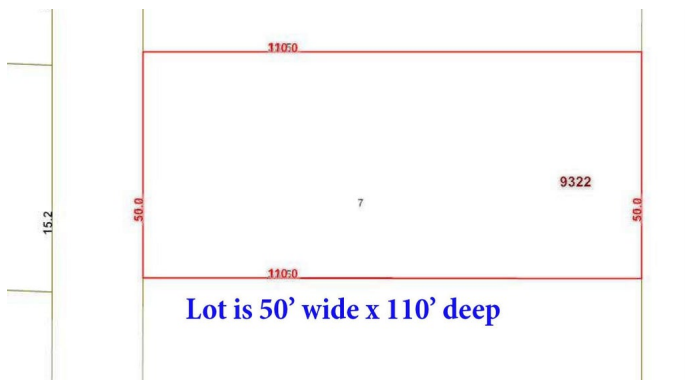
MLS® #E4443993

\$379,000

0 Bedroom, 0.00 Bathroom,
Single Family on 0.00 Acres

West Meadowlark Park, Edmonton, AB

Prime 50-foot wide lot in the highly sought-after West Meadowlark Place. Situated on a peaceful street surrounded by well-established, friendly neighbors, this property offers an excellent redevelopment opportunity



Essential Information

MLS® #	E4443993
Price	\$379,000
Bathrooms	0.00
Acres	0.00
Type	Single Family
Sub-Type	Vacant Lot/Land
Status	Active

Community Information

Address	9322 168 Street
Area	Edmonton
Subdivision	West Meadowlark Park
City	Edmonton
County	ALBERTA
Province	AB
Postal Code	T5R 2W3

Exterior

Exterior Features Back Lane, Public Transportation, Schools, Shopping Nearby,



Subdividable Lot, See Remarks

Additional Information

Date Listed June 24th, 2025

Days on Market 9

Zoning Zone 22

DATA IS DEEMED RELIABLE BUT IS NOT GUARANTEED ACCURATE BY THE REALTORS® ASSOCIATION OF EDMONTON. COPYRIGHT 2025 BY THE REALTORS® ASSOCIATION OF EDMONTON. ALL RIGHTS RESERVED. Trademarks are owned or controlled by the Canadian Real Estate Association (CREA) and identify real estate professionals who are members of CREA (REALTOR®, REALTORS®) and/or the quality of services they provide (MLS®, Multiple Listing Service®)

Listing information last updated on July 3rd, 2025 at 9:03am MDT