

## \$499,900 - 7 Lamplight Cove, Spruce Grove

MLS® #E4444191

**\$499,900**

4 Bedroom, 3.50 Bathroom, 1,831 sqft

Single Family on 0.00 Acres

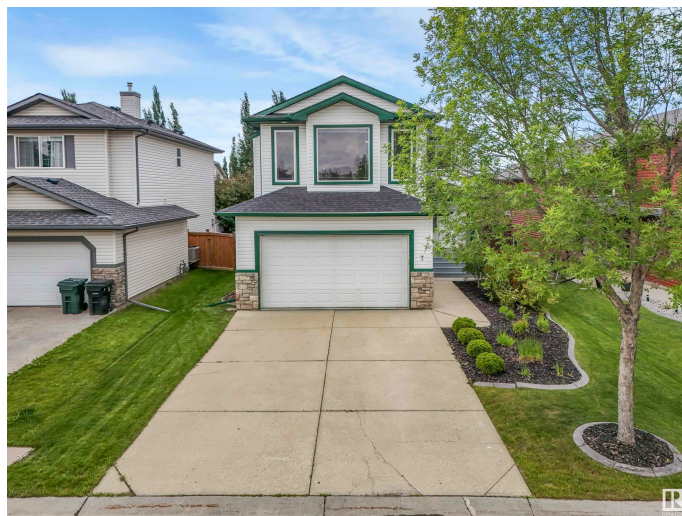
Legacy Park, Spruce Grove, AB

Welcome to 7 Lamplight Cove! This 4-bedroom, 3.5-bath home in Spruce Grove delivers over 2,500 sq ft of total living space and excellent proximity to daily amenities. The main floor features a bright, open layout with a gas fireplace and built-in cabinetry in the living room, plus a convenient 2 pc bathroom. The kitchen offers a walk-in pantry and an island with room for additional seating. Upstairs youâ€™ll find a spacious family room, laundry, and 3 bedrooms â€“ including a large primary bedroom with a walk-in closet and a 4 pc ensuite. The basement is fully finished with a fourth bedroom, 3 pc bath, and versatile rec space. Outside, enjoy a fully fenced yard with covered deck and storage shed. Located within walking distance to groceries and just a 5-minute drive to Westland Market Mall, this home offers comfort, space, and convenience in one of Spruce Groveâ€™s most accessible neighbourhoods.

Built in 2005

### Essential Information

MLS® #	E4444191
Price	\$499,900
Bedrooms	4
Bathrooms	3.50
Full Baths	3





Half Baths	1
Square Footage	1,831
Acres	0.00
Year Built	2005
Type	Single Family
Sub-Type	Detached Single Family
Style	2 Storey
Status	Active

### **Community Information**

Address	7 Lamplight Cove
Area	Spruce Grove
Subdivision	Legacy Park
City	Spruce Grove
County	ALBERTA
Province	AB
Postal Code	T7X 4R2

### **Amenities**

Amenities	Off Street Parking, Air Conditioner, Deck
Parking Spaces	5
Parking	Double Garage Attached, Front Drive Access

### **Interior**

Interior Features	ensuite bathroom
Appliances	Dishwasher-Built-In, Dryer, Hood Fan, Refrigerator, Stove-Electric, Washer, Window Coverings
Heating	Forced Air-1, Natural Gas
Fireplace	Yes
Fireplaces	Tile Surround
Stories	3
Has Basement	Yes
Basement	Full, Finished

### **Exterior**

Exterior	Wood, Vinyl
Exterior Features	Fenced, Golf Nearby, No Back Lane, Shopping Nearby
Roof	Asphalt Shingles
Construction	Wood, Vinyl



Foundation                Concrete Perimeter

**School Information**

Elementary                Copperhaven School  
Middle                      Copperhaven School  
High                        Spruce Grove Composite

**Additional Information**

Date Listed                June 25th, 2025  
Days on Market        10  
Zoning                      Zone 91

DATA IS DEEMED RELIABLE BUT IS NOT GUARANTEED ACCURATE BY THE REALTORS® ASSOCIATION OF EDMONTON. COPYRIGHT 2025 BY THE REALTORS® ASSOCIATION OF EDMONTON. ALL RIGHTS RESERVED.Trademarks are owned or controlled by the Canadian Real Estate Association (CREA) and identify real estate professionals who are members of CREA (REALTOR®, REALTORS®) and/or the quality of services they provide (MLS®, Multiple Listing Service®)  
Listing information last updated on July 4th, 2025 at 10:47pm MDT