

\$650,000 - 5911 168 Avenue, Edmonton

MLS® #E4445244

\$650,000

5 Bedroom, 3.50 Bathroom, 2,570 sqft

Single Family on 0.00 Acres

McConachie Area, Edmonton, AB

Spacious and welcoming, this lovely home in McConachie is designed to fit the rhythm of real life. With 4+1 beds, 3.5 baths, a main floor office, bonus room upstairs, and a finished basement, it offers plenty of space for families to grow, gather and recharge. The main floor features an office/den, formal dining room for special dinners, bright living room with cozy gas fireplace, kitchen with S.S. appliances, island, breakfast nook, and a 2-pc bath. A laundry/mudroom off the attached garage (with epoxy-coated floor!) keeps things running smoothly. Upstairs are 4 bedrooms including a generous primary suite with walk-in closet and 4-pc ensuite with jetted tub and separate shower. A bonus room and 4-pc bath complete the upper level. The basement offers a family room, flex space, storage/office, and 4-pc bath. Out back enjoy summer evenings in the landscaped yard with deck and gazebo. Close to schools, shopping and commuter routes, this home blends comfort and convenience in one beautiful package.

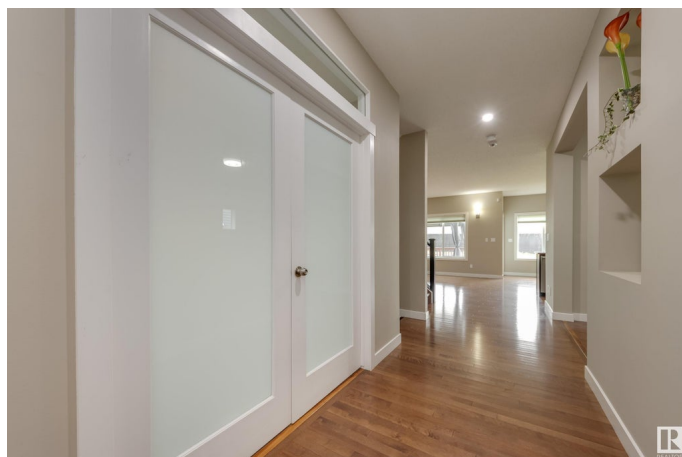
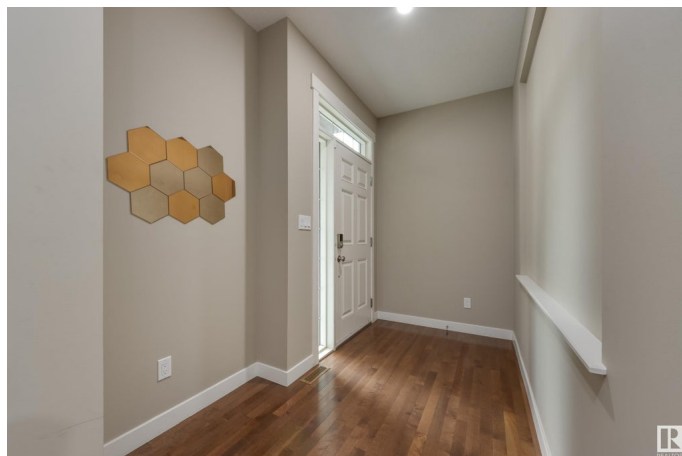
Built in 2011

Essential Information

MLS® # E4445244

Price \$650,000

Bedrooms 5



Bathrooms	3.50
Full Baths	3
Half Baths	1
Square Footage	2,570
Acres	0.00
Year Built	2011
Type	Single Family
Sub-Type	Detached Single Family
Style	2 Storey
Status	Active

Community Information

Address	5911 168 Avenue
Area	Edmonton
Subdivision	McConachie Area
City	Edmonton
County	ALBERTA
Province	AB
Postal Code	T5Y 0P4

Amenities

Amenities	Air Conditioner, Deck, Gazebo
Parking Spaces	4
Parking	Double Garage Attached

Interior

Interior Features	ensuite bathroom
Appliances	Air Conditioning-Central, Dishwasher-Built-In, Dryer, Garage Control, Garage Opener, Microwave Hood Fan, Refrigerator, Stove-Electric, Vacuum System Attachments, Vacuum Systems, Washer, Water Distiller, Window Coverings
Heating	Forced Air-2, Natural Gas
Fireplace	Yes
Fireplaces	Mantel, Tile Surround
Stories	3
Has Basement	Yes
Basement	Full, Finished

Exterior

Exterior	Wood, Vinyl
Exterior Features	Fenced, Landscaped, Schools, Shopping Nearby
Roof	Asphalt Shingles
Construction	Wood, Vinyl
Foundation	Concrete Perimeter

School Information

Elementary	Soraya Hafez
Middle	Steele Heights
High	M.E. Lazerte

Additional Information

Date Listed	July 2nd, 2025
Days on Market	5
Zoning	Zone 03

DATA IS DEEMED RELIABLE BUT IS NOT GUARANTEED ACCURATE BY THE REALTORS® ASSOCIATION OF EDMONTON. COPYRIGHT 2025 BY THE REALTORS® ASSOCIATION OF EDMONTON. ALL RIGHTS RESERVED.Trademarks are owned or controlled by the Canadian Real Estate Association (CREA) and identify real estate professionals who are members of CREA (REALTOR®, REALTORS®) and/or the quality of services they provide (MLS®, Multiple Listing Service®)

Listing information last updated on July 7th, 2025 at 10:32am MDT