

\$799,900 - 462019 Rge Road 255, Rural Wetaskiwin County

MLS® #E4445342

\$799,900

4 Bedroom, 2.50 Bathroom, 1,575 sqft

Rural on 19.97 Acres

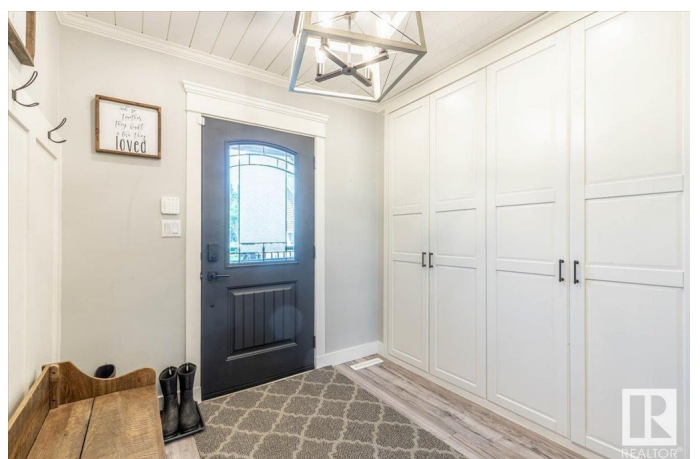
None, Rural Wetaskiwin County, AB

WELCOME TO YOUR BEAUTIFUL DREAM ACREAGE! Nestled on a sprawling 19.97 acres of pure tranquility, not in a subdivision. This property is a horse lover's paradise, complete w/ 32x60 Barn, 40x40 Shop, Quonset, 32x16 Work Shop w/8x8 walk-in & dbl car garage w/heat. Step inside this beautifully renovated character home with a new gorgeous kitchen that is sure to inspire your inner chef! Beautiful white cabinetry reaches up to the ceiling, creating a bright & airy feel w/ no wasted space. Stunning backsplash, quartz countertops, apron sink, 5 appliances & centre island are just the cherries on top, along w/ garden doors out to your private oasis. This home boasts 4 cozy bedrooms, 3 baths + central air-conditioning. Outside you will find an above-ground, heated pool w/deck and a gorgeous covered aggregate patio for dining & entertaining. Your new piece of paradise is awaiting!

Built in 1943

Essential Information

MLS® #	E4445342
Price	\$799,900
Bedrooms	4
Bathrooms	2.50



Full Baths	2
Half Baths	1
Square Footage	1,575
Acres	19.97
Year Built	1943
Type	Rural
Sub-Type	Detached Single Family
Style	1 and Half Storey
Status	Active

Community Information

Address	462019 Rge Road 255
Area	Rural Wetaskiwin County
Subdivision	None
City	Rural Wetaskiwin County
County	ALBERTA
Province	AB
Postal Code	T9A 1W8

Amenities

Features	Air Conditioner, Deck, Fire Pit, No Smoking Home, Patio, Pool-Outdoor, Vinyl Windows
----------	--

Interior

Interior Features	ensuite bathroom
Heating	Forced Air-1, Natural Gas
Fireplace	Yes
Stories	3
Has Basement	Yes
Basement	Full, Finished

Exterior

Exterior	Wood
Exterior Features	Cross Fenced, Fenced, Fruit Trees/Shrubs, Golf Nearby, Landscaped, Stream/Pond, Treed Lot, Vegetable Garden
Construction	Wood
Foundation	Concrete Perimeter

Additional Information

Date Listed July 2nd, 2025

Days on Market 19

Zoning Zone 80

DATA IS DEEMED RELIABLE BUT IS NOT GUARANTEED ACCURATE BY THE REALTORS® ASSOCIATION OF EDMONTON. COPYRIGHT 2025 BY THE REALTORS® ASSOCIATION OF EDMONTON. ALL RIGHTS RESERVED. Trademarks are owned or controlled by the Canadian Real Estate Association (CREA) and identify real estate professionals who are members of CREA (REALTOR®, REALTORS®) and/or the quality of services they provide (MLS®, Multiple Listing Service®)

Listing information last updated on July 21st, 2025 at 12:03pm MDT