

# \$1,050,000 - 11, 53219 Rge Road 271, Rural Parkland County

MLS® #E4445921

**\$1,050,000**

7 Bedroom, 3.00 Bathroom, 2,172 sqft

Rural on 4.42 Acres

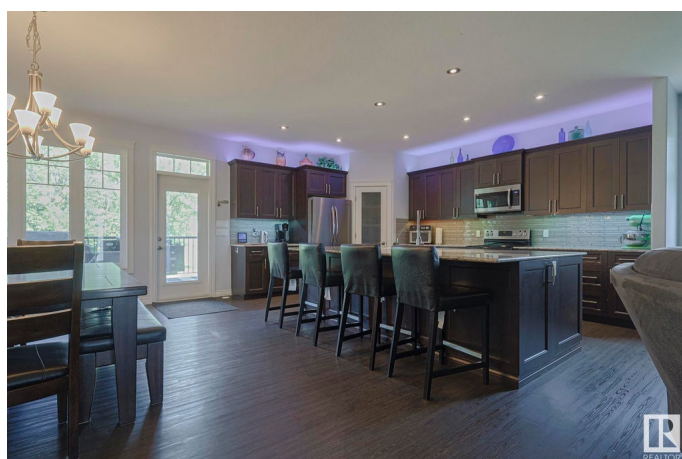
Rolling Meadow Estates, Rural Parkland County, AB

Experience exceptional country living just minutes north of Spruce Grove in this beautifully designed 7-bedroom, 4,000 sq. ft. estate built in 2016, blending elegance, space, and sustainability. Stylish quartz countertops to the air-conditioned interiors and soundproofed master retreat, every inch of this home is tailored for comfort and quiet luxury—featuring a 4-car attached garage with its soaring 11.5-foot ceilings and a separate oversized pole shed for your vehicles, hobbies or storage, central vacuum for easy upkeep, and a wood-burning fireplace that adds rustic charm, while the covered deck offers a perfect setting to take in the outdoors; beyond the home, enjoy a thoughtfully designed property complete with a septic treatment plant, in-ground 6' root cellar, and greenhouse—all while being conveniently located with quick access to Spruce Grove and Edmonton.

Built in 2016

## Essential Information

MLS® #	E4445921
Price	\$1,050,000
Bedrooms	7



Bathrooms	3.00
Full Baths	3
Square Footage	2,172
Acres	4.42
Year Built	2016
Type	Rural
Sub-Type	Detached Single Family
Style	Bungalow
Status	Active

### **Community Information**

Address	11, 53219 Rge Road 271
Area	Rural Parkland County
Subdivision	Rolling Meadow Estates
City	Rural Parkland County
County	ALBERTA
Province	AB
Postal Code	T7X 3L9

### **Amenities**

Features	Air Conditioner, Deck, Dog Run-Fenced In, Greenhouse, No Smoking Home, Patio, Vinyl Windows, See Remarks
----------	--

### **Interior**

Interior Features	ensuite bathroom
Heating	Forced Air-1, In Floor Heat System, Natural Gas
Fireplace	Yes
Stories	2
Has Basement	Yes
Basement	Full, Finished

### **Exterior**

Exterior	Wood
Exterior Features	Golf Nearby, Treed Lot, Vegetable Garden, See Remarks, Partially Fenced
Construction	Wood
Foundation	Concrete Perimeter

### **Additional Information**

Date Listed July 4th, 2025

Days on Market 53

Zoning Zone 70

DATA IS DEEMED RELIABLE BUT IS NOT GUARANTEED ACCURATE BY THE REALTORS® ASSOCIATION OF EDMONTON. COPYRIGHT 2025 BY THE REALTORS® ASSOCIATION OF EDMONTON. ALL RIGHTS RESERVED. Trademarks are owned or controlled by the Canadian Real Estate Association (CREA) and identify real estate professionals who are members of CREA (REALTOR®, REALTORS®) and/or the quality of services they provide (MLS®, Multiple Listing Service®)

Listing information last updated on August 26th, 2025 at 8:47am MDT