

\$375,000 - 13840 30 Street, Edmonton

MLS® #E4445924

\$375,000

3 Bedroom, 1.50 Bathroom, 1,323 sqft

Single Family on 0.00 Acres

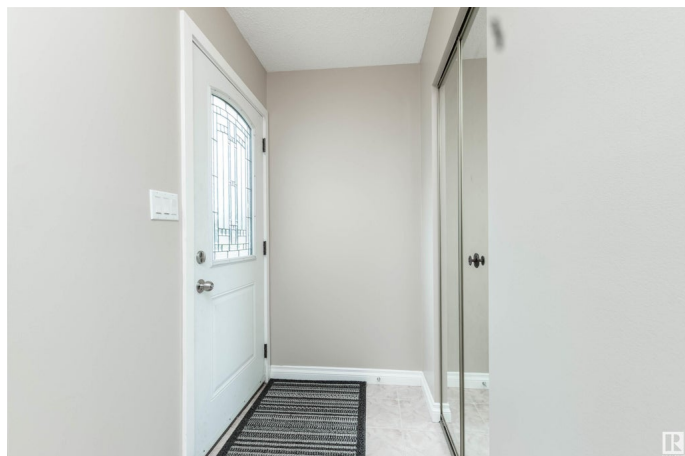
Hairsine, Edmonton, AB

Charming 3-bedroom, 2-bathroom bungalow featuring a dining room and cozy breakfast nook. Enjoy the warmth of an gas fireplace in the bright, naturally lit living room. The large unfinished basement offers endless possibilities to customize to your needs. Step outside to a beautiful deck and a spacious, fenced yardâ€”ideal for entertaining or relaxing. An oversized double garage and large parking pad provide ample parking. Surrounded by parks, trails and tons of shopping near by, you have plenty of amenities within walking distance! This well-kept family home combines comfort, functionality, and great potential in every corner!

Built in 1978

Essential Information

| | |
|----------------|-----------|
| MLS® # | E4445924 |
| Price | \$375,000 |
| Bedrooms | 3 |
| Bathrooms | 1.50 |
| Full Baths | 1 |
| Half Baths | 1 |
| Square Footage | 1,323 |
| Acres | 0.00 |
| Year Built | 1978 |



| | |
|----------|------------------------|
| Type | Single Family |
| Sub-Type | Detached Single Family |
| Style | Bungalow |
| Status | Active |

Community Information

| | |
|-------------|-----------------|
| Address | 13840 30 Street |
| Area | Edmonton |
| Subdivision | Hairsine |
| City | Edmonton |
| County | ALBERTA |
| Province | AB |
| Postal Code | T5Y 1M5 |

Amenities

| | |
|-----------|--|
| Amenities | On Street Parking, Deck, Fire Pit, Parking-Extra |
| Parking | Double Garage Detached, Parking Pad Cement/Paved |

Interior

| | |
|-------------------|--|
| Interior Features | ensuite bathroom |
| Appliances | Dishwasher-Built-In, Dryer, Freezer, Garage Control, Garage Opener, Hood Fan, Refrigerator, Stove-Electric, Washer, Window Coverings |
| Heating | Forced Air-1, Natural Gas |
| Fireplace | Yes |
| Fireplaces | Brick Facing |
| Stories | 1 |
| Has Basement | Yes |
| Basement | Full, Unfinished |

Exterior

| | |
|-------------------|--|
| Exterior | Wood, Brick, Vinyl |
| Exterior Features | Cul-De-Sac, Fenced, Landscaped, Picnic Area, Playground Nearby, Public Transportation, Recreation Use, Shopping Nearby |
| Roof | Asphalt Shingles |
| Construction | Wood, Brick, Vinyl |
| Foundation | Concrete Perimeter |

Additional Information

| | |
|-------------|----------------|
| Date Listed | July 4th, 2025 |
|-------------|----------------|

Days on Market 6

Zoning Zone 35

DATA IS DEEMED RELIABLE BUT IS NOT GUARANTEED ACCURATE BY THE REALTORS® ASSOCIATION OF EDMONTON. COPYRIGHT 2025 BY THE REALTORS® ASSOCIATION OF EDMONTON. ALL RIGHTS RESERVED. Trademarks are owned or controlled by the Canadian Real Estate Association (CREA) and identify real estate professionals who are members of CREA (REALTOR®, REALTORS®) and/or the quality of services they provide (MLS®, Multiple Listing Service®)

Listing information last updated on July 10th, 2025 at 12:47pm MDT