

\$379,000 - 22 25515 Twp Road 511 A, Rural Parkland County

MLS® #E4446401

\$379,000

0 Bedroom, 0.00 Bathroom,
Rural on 1.00 Acres

The Estates at Blackhawk, Rural Parkland County, AB

Here is one of the few remaining building parcels in The Estates at Blackhawk. This parcel offers a great golf Course view Backing onto the Tee-Box on #4 and fairway, an ideal site for a large footprint bungalow style home. There are many fine homes in Blackhawk Estates. Just a short walk to the river valley or to the world class Blackhawk Golf Club (Memberships available). From here it is just a 15 minute drive to west Edmonton or about the same to the International Airport or the Leduc/Nisku area.

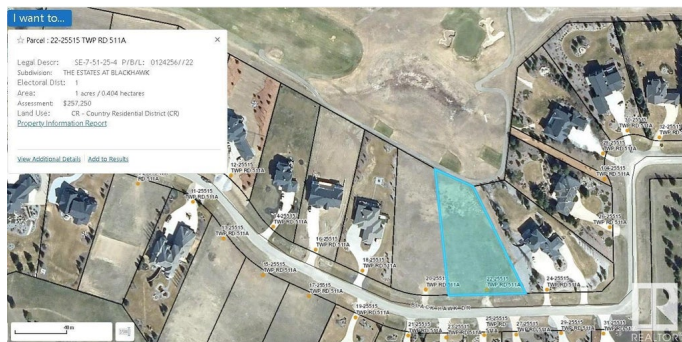


Essential Information

| | |
|-----------|-----------------|
| MLS® # | E4446401 |
| Price | \$379,000 |
| Bathrooms | 0.00 |
| Acres | 1.00 |
| Type | Rural |
| Sub-Type | Vacant Lot/Land |
| Status | Active |

Community Information

| | |
|-------------|--------------------------|
| Address | 22 25515 Twp Road 511 A |
| Area | Rural Parkland County |
| Subdivision | The Estates at Blackhawk |



| | |
|-------------|-----------------------|
| City | Rural Parkland County |
| County | ALBERTA |
| Province | AB |
| Postal Code | T7Y 1A8 |

Exterior

Exterior Features Flat Site, Golf Nearby, No Through Road, Sloping Lot, Street Lighting

Additional Information

| | |
|----------------|----------------|
| Date Listed | July 7th, 2025 |
| Days on Market | 15 |
| Zoning | Zone 90 |

DATA IS DEEMED RELIABLE BUT IS NOT GUARANTEED ACCURATE BY THE REALTORS® ASSOCIATION OF EDMONTON. COPYRIGHT 2025 BY THE REALTORS® ASSOCIATION OF EDMONTON. ALL RIGHTS RESERVED. Trademarks are owned or controlled by the Canadian Real Estate Association (CREA) and identify real estate professionals who are members of CREA (REALTOR®, REALTORS®) and/or the quality of services they provide (MLS®, Multiple Listing Service®)

Listing information last updated on July 22nd, 2025 at 10:32am MDT