

# \$139,900 - 5516 45 Avenue, Wetaskiwin

MLS® #E4446549

**\$139,900**

0 Bedroom, 0.00 Bathroom,  
Land Commercial on 0.00 Acres

West Central (Wetaskiwin), Wetaskiwin, AB

Located just off the auto-mile, prime  
development land available! 1,746 M2, (.43  
acre) - zoned C3 Some restrictions apply

## Essential Information

MLS® #	E4446549
Price	\$139,900
Bathrooms	0.00
Acres	0.00
Type	Land Commercial
Status	Active

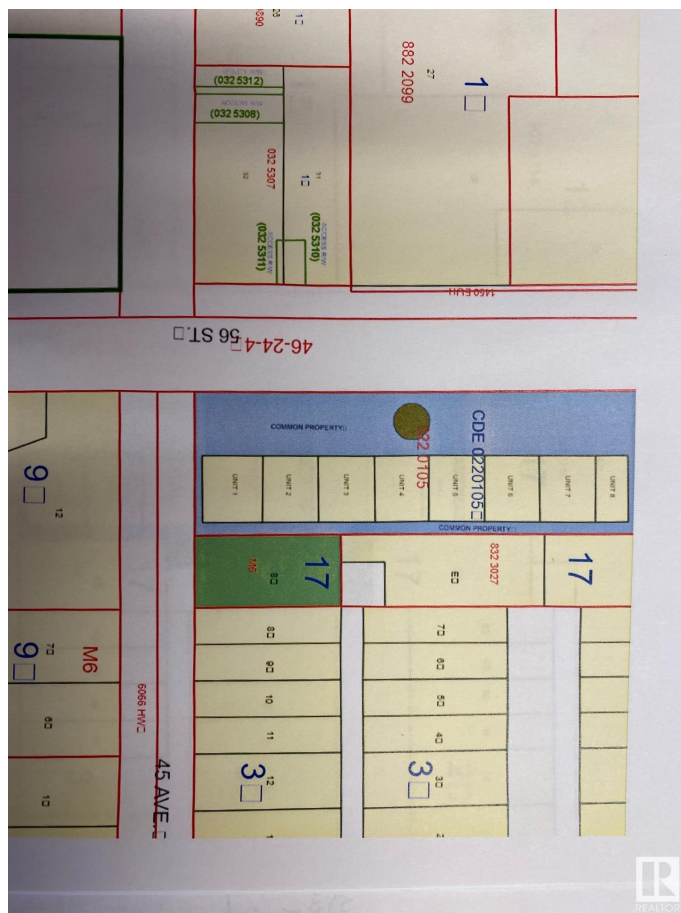
## Community Information

Address	5516 45 Avenue
Area	Wetaskiwin
Subdivision	West Central (Wetaskiwin)
City	Wetaskiwin
County	ALBERTA
Province	AB
Postal Code	T9A 0G2

## Additional Information

Date Listed	July 8th, 2025
Days on Market	70
Zoning	Zone 80

DATA IS DEEMED RELIABLE BUT IS NOT GUARANTEED ACCURATE BY THE REALTORS® ASSOCIATION OF EDMONTON. COPYRIGHT 2025 BY THE REALTORS® ASSOCIATION OF EDMONTON. ALL RIGHTS



RESERVED.Trademarks are owned or controlled by the Canadian Real Estate Association (CREA) and identify real estate professionals who are members of CREA (REALTOR®, REALTORS®) and/or the quality of services they provide (MLS®, Multiple Listing Service®)

Listing information last updated on September 16th, 2025 at 6:32pm MDT