

\$730,900 - 1 Horizon Link, Spruce Grove

MLS® #E4447065

\$730,900

3 Bedroom, 3.00 Bathroom, 2,461 sqft

Single Family on 0.00 Acres

Hilldowns, Spruce Grove, AB

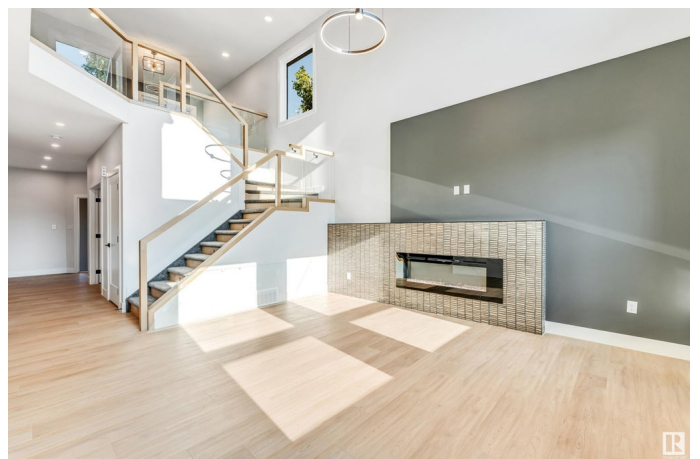
Built by Sunnyview Homes, this TRIPLE car garage property comes with high-end finishes. The bright, open-concept main floor features a versatile den/bedroom, 3- piece bathroom with customized wall tiles. Open to below family room with a feature wall, electric fireplace, upgraded indented ceiling with a striking modern chandelier. The gourmet kitchen boasts two-toned, soft close ceiling height cabinets, quartz countertops, pull out spice racks and SS appliances. Breakfast nook with extended cabinets, wine rack and beverage cooler, walk-through pantry and a spacious mudroom with MDF shelving. Sleek glass railing with step lights leads to the 2nd floor bonus room. The primary suite is a private retreat with a tiled spa-like 5-piece ensuite w/dual sinks, and a spacious walk-in closet. Two additional generous sized bedrooms and a common 4-piece bathroom complete this floor. SEPARATE SIDE entrance to the bsmt. Premium lighting, feature walls, 3 gas lines plus much more. Close to amenities. A must see!

Built in 2025

Essential Information

MLS® # E4447065

Price \$730,900



Bedrooms	3
Bathrooms	3.00
Full Baths	3
Square Footage	2,461
Acres	0.00
Year Built	2025
Type	Single Family
Sub-Type	Detached Single Family
Style	2 Storey
Status	Active

Community Information

Address	1 Horizon Link
Area	Spruce Grove
Subdivision	Hilldowns
City	Spruce Grove
County	ALBERTA
Province	AB
Postal Code	T7X 0X5

Amenities

Amenities	Ceiling 10 ft., Ceiling 9 ft.
Parking	Double Garage Attached, Triple Garage Attached

Interior

Interior Features	ensuite bathroom
Appliances	Dishwasher-Built-In, Garage Control, Garage Opener, Hood Fan, Oven-Built-In, Oven-Microwave, Refrigerator, Stove-Countertop Gas, Wine/Beverage Cooler
Heating	Forced Air-1, Natural Gas
Fireplace	Yes
Fireplaces	Wall Mount
Stories	2
Has Basement	Yes
Basement	Full, Unfinished

Exterior

Exterior	Wood, Vinyl
Exterior Features	Airport Nearby, Golf Nearby, Playground Nearby, Public Transportation,

	Schools, Shopping Nearby
Roof	Asphalt Shingles
Construction	Wood, Vinyl
Foundation	Concrete Perimeter

Additional Information

Date Listed	July 10th, 2025
Days on Market	10
Zoning	Zone 91

DATA IS DEEMED RELIABLE BUT IS NOT GUARANTEED ACCURATE BY THE REALTORS® ASSOCIATION OF EDMONTON. COPYRIGHT 2025 BY THE REALTORS® ASSOCIATION OF EDMONTON. ALL RIGHTS RESERVED. Trademarks are owned or controlled by the Canadian Real Estate Association (CREA) and identify real estate professionals who are members of CREA (REALTOR®, REALTORS®) and/or the quality of services they provide (MLS®, Multiple Listing Service®)

Listing information last updated on July 20th, 2025 at 4:32pm MDT