

\$389,900 - 7203 138 Avenue, Edmonton

MLS® #E4447272

\$389,900

4 Bedroom, 2.50 Bathroom, 1,255 sqft

Single Family on 0.00 Acres

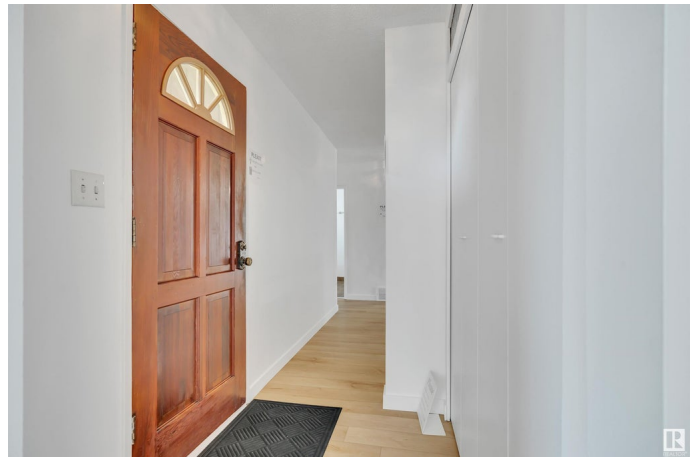
Kildare, Edmonton, AB

Located on a quiet street, this spacious 1,255 sq. ft. bungalow in the Northside community of Kildare is newly renovated on the main floor with new laminate flooring and new paint. Large living room with big windows. Spacious dining room. Kitchen has new countertops, new sink, tiled backsplash, and new stainless steel fridge and stove. Large breakfast nook with access to the backyard. Three good size bedrooms and a 4 pcs. bath. Primary bedroom has 3 pcs. ensuite. Both bathrooms has new vanity top. Fully finished basement has recreation room with wet bar and wood burning fireplace, fourth bedroom, a den, laundry room, storage, and a 2 pcs. bath. Newer roof. Fenced and landscaped yard. Double detached garage. Close to all amenities.

Built in 1967

Essential Information

MLS® #	E4447272
Price	\$389,900
Bedrooms	4
Bathrooms	2.50
Full Baths	2
Half Baths	1
Square Footage	1,255
Acres	0.00



Year Built	1967
Type	Single Family
Sub-Type	Detached Single Family
Style	Bungalow
Status	Active

Community Information

Address	7203 138 Avenue
Area	Edmonton
Subdivision	Kildare
City	Edmonton
County	ALBERTA
Province	AB
Postal Code	T5C 2L9

Amenities

Amenities	Bar
Parking	Double Garage Detached

Interior

Interior Features	ensuite bathroom
Appliances	Dryer, Garage Control, Garage Opener, Hood Fan, Refrigerator, Stove-Electric, Vacuum System Attachments, Vacuum Systems, Washer, Window Coverings
Heating	Forced Air-1, Natural Gas
Fireplace	Yes
Fireplaces	Brick Facing
Stories	2
Has Basement	Yes
Basement	Full, Finished

Exterior

Exterior	Wood, Stucco
Exterior Features	Back Lane, Fenced, Landscaped, Public Transportation, Schools, Shopping Nearby
Roof	Asphalt Shingles
Construction	Wood, Stucco
Foundation	Concrete Perimeter

Additional Information

Date Listed July 11th, 2025

Days on Market 68

Zoning Zone 02

DATA IS DEEMED RELIABLE BUT IS NOT GUARANTEED ACCURATE BY THE REALTORS® ASSOCIATION OF EDMONTON. COPYRIGHT 2025 BY THE REALTORS® ASSOCIATION OF EDMONTON. ALL RIGHTS RESERVED. Trademarks are owned or controlled by the Canadian Real Estate Association (CREA) and identify real estate professionals who are members of CREA (REALTOR®, REALTORS®) and/or the quality of services they provide (MLS®, Multiple Listing Service®)

Listing information last updated on September 17th, 2025 at 1:02am MDT