

Courtesy Of Nicole Bosse Of RE/MAX River City

\$118,000 - 109 47 Sturgeon Road, St. Albert

MLS® #E4448005

\$118,000

2 Bedroom, 1.00 Bathroom, 822 sqft
Condo / Townhouse on 0.00 Acres

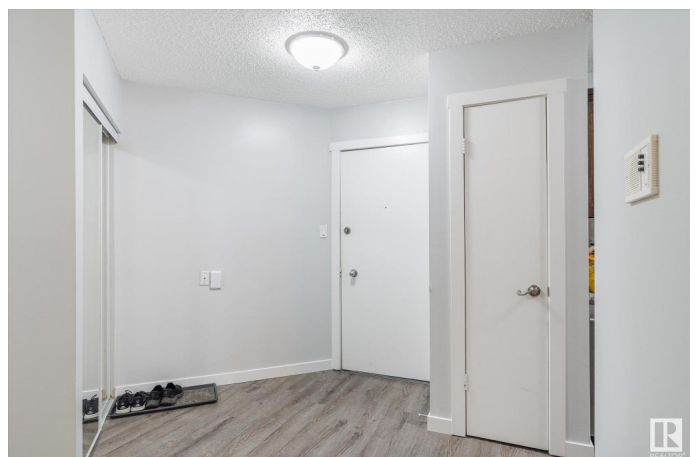
Braeside, St. Albert, AB

A 2-bedroom apartment in St. Albert, just minutes from downtown, with updates at this price? Now that's a rare find. Whether you're a first-time buyer or savvy investor, this is a fantastic opportunity. With over 800 sq ft of living space, this well-maintained unit features tasteful upgrades including laminate flooring throughout, granite countertops, stainless steel appliances, and generous in-suite storage. The functional layout and spacious rooms make it both practical and comfortable. Located in the highly desirable community of Braeside, this home offers incredible value in a prime location—especially with today's limited inventory for budget-conscious buyers.

Built in 1972

Essential Information

| | |
|----------------|-------------------|
| MLS® # | E4448005 |
| Price | \$118,000 |
| Bedrooms | 2 |
| Bathrooms | 1.00 |
| Full Baths | 1 |
| Square Footage | 822 |
| Acres | 0.00 |
| Year Built | 1972 |
| Type | Condo / Townhouse |



| | |
|----------|------------------------|
| Sub-Type | Lowrise Apartment |
| Style | Single Level Apartment |
| Status | Active |

Community Information

| | |
|-------------|----------------------|
| Address | 109 47 Sturgeon Road |
| Area | St. Albert |
| Subdivision | Braeside |
| City | St. Albert |
| County | ALBERTA |
| Province | AB |
| Postal Code | T8N 0E8 |

Amenities

| | |
|----------------|--------------------------------------------------|
| Amenities | Parking-Plug-Ins, Parking-Visitor, Security Door |
| Parking Spaces | 1 |
| Parking | Stall |

Interior

| | |
|--------------|-----------------------------------------------------------------------------------------|
| Appliances | Dishwasher-Built-In, Microwave Hood Fan, Refrigerator, Stove-Electric, Window Coverings |
| Heating | Baseboard, Natural Gas |
| # of Stories | 3 |
| Stories | 3 |
| Has Basement | Yes |
| Basement | None, No Basement |

Exterior

| | |
|-------------------|--------------------------------------------------------------------------------------------------------|
| Exterior | Wood, Stucco |
| Exterior Features | Backs Onto Park/Trees, Golf Nearby, Playground Nearby, Public Transportation, Schools, Shopping Nearby |
| Roof | Asphalt Shingles |
| Construction | Wood, Stucco |
| Foundation | Concrete Perimeter |

Additional Information

| | |
|----------------|-----------------|
| Date Listed | July 16th, 2025 |
| Days on Market | 3 |
| Zoning | Zone 24 |

Condo Fee \$499

DATA IS DEEMED RELIABLE BUT IS NOT GUARANTEED ACCURATE BY THE REALTORS® ASSOCIATION OF EDMONTON. COPYRIGHT 2025 BY THE REALTORS® ASSOCIATION OF EDMONTON. ALL RIGHTS RESERVED. Trademarks are owned or controlled by the Canadian Real Estate Association (CREA) and identify real estate professionals who are members of CREA (REALTOR®, REALTORS®) and/or the quality of services they provide (MLS®, Multiple Listing Service®)

Listing information last updated on July 19th, 2025 at 6:47am MDT