

\$499,000 - 1818 Tomlinson Crescent, Edmonton

MLS® #E4448153

\$499,000

4 Bedroom, 2.50 Bathroom, 1,464 sqft

Single Family on 0.00 Acres

Terwillegar Towne, Edmonton, AB

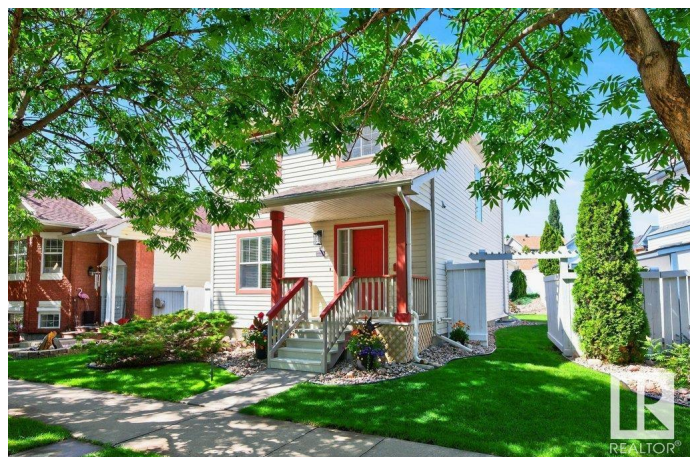
Youâ€™ll love the beauty of Terwillegar Towne & this 2-story home on a quiet street with a treed boulevard. Close to schools, parks, Terwillegar Rec Centre, shopping & transit, w/ easy access to Anthony Henday. Fresh paint & new vinyl plank flooring on 2 levels & new baseboards add a modern look. The main floor is an open-concept kitchen/dining/great room, as well as a formal living room & 2-piece powder room. The kitchen has a walk-in pantry, new quartz countertops & new SS appliances (2025). The upstairs features a 4pc bath, two bedrooms, and a KING SIZED primary bedroom w/ a walk-in closet & 3pc en-suite with a quartz vanity top. The basement has a spacious recreation room, an extra bedroom, a large storage room & utility room w/ laundry. Off the back deck is a beautifully landscaped, OVERSIZED yard & double detached garage with extended parking pad & lots of visitor parking out front. The roof, furnace & HWT were replaced in 2016. The house is also energy efficient w/ 2 x 6 construction. A Gorgeous Home!

Built in 1999

Essential Information

MLS® # E4448153

Price \$499,000



Bedrooms	4
Bathrooms	2.50
Full Baths	2
Half Baths	1
Square Footage	1,464
Acres	0.00
Year Built	1999
Type	Single Family
Sub-Type	Detached Single Family
Style	2 Storey
Status	Active

Community Information

Address	1818 Tomlinson Crescent
Area	Edmonton
Subdivision	Terwillegar Towne
City	Edmonton
County	ALBERTA
Province	AB
Postal Code	T6R 2T4

Amenities

Amenities	On Street Parking, Deck, Detectors Smoke, No Animal Home, No Smoking Home, Vinyl Windows
Parking Spaces	7
Parking	Double Garage Detached

Interior

Interior Features	ensuite bathroom
Appliances	Alarm/Security System, Dishwasher-Built-In, Dryer, Garage Control, Garage Opener, Hood Fan, Oven-Microwave, Stove-Electric, Washer, Refrigerators-Two
Heating	Forced Air-1, Natural Gas
Stories	3
Has Basement	Yes
Basement	Full, Finished

Exterior

Exterior	Wood, Vinyl
----------	-------------

Exterior Features	Back Lane, Fenced, Landscaped, Paved Lane, Schools, Shopping Nearby, Treed Lot
Roof	Asphalt Shingles
Construction	Wood, Vinyl
Foundation	Concrete Perimeter

School Information

Elementary	Esther Starkman
Middle	Nellia Carlson
High	William Osborne

Additional Information

Date Listed	July 16th, 2025
Days on Market	2
Zoning	Zone 14
HOA Fees	138
HOA Fees Freq.	Annually

DATA IS DEEMED RELIABLE BUT IS NOT GUARANTEED ACCURATE BY THE REALTORS® ASSOCIATION OF EDMONTON. COPYRIGHT 2025 BY THE REALTORS® ASSOCIATION OF EDMONTON. ALL RIGHTS RESERVED.Trademarks are owned or controlled by the Canadian Real Estate Association (CREA) and identify real estate professionals who are members of CREA (REALTOR®, REALTORS®) and/or the quality of services they provide (MLS®, Multiple Listing Service®)

Listing information last updated on July 18th, 2025 at 7:17am MDT